

Compliance Report on the Performance of Electric Cooperatives

1st Quarter 2024



Office for Performance Assessment and Special Studies

Table of Contents

| | | |
|------|--|----|
| I. | Executive Summary | 3 |
| II. | Introduction | 4 |
| | A. Overview | 4 |
| | B. NEA Policy and Guidelines | 4 |
| | C. Key Performance Standards and Parameters | 6 |
| | D. Classification of Electric Cooperatives | 6 |
| III. | Compliance to Key Performance Standards and Parameters. | 13 |
| | A. Financial and Operational Standards and Parameters | 13 |
| | 1. Cash General Fund | 13 |
| | 2. Collection Efficiency | 14 |
| | 3. Payment to Generating Companies, NGCP and other | 16 |
| | 4. Payment to Financial Institutions (NEA, Banks and other FIs) | 19 |
| | 5. Result of Financial Operation (Before RFSC) | 20 |
| | 6. Net Worth | 21 |
| | B. Technical Standards and Parameters | 22 |
| | 1. System Loss | 22 |
| | 2. Power Reliability | 24 |
| | C. Institutional Standards and Parameters | 26 |
| IV. | Status of Rural Electrification Program | 27 |
| V. | Appendices | 28 |
| | A. Appendix A: Electric Cooperatives Performance Assessment Sheet..... | 28 |
| | B. Appendix B: Technical Parameter Indices | 33 |
| | C. Appendix C: Institutional Compliance Rating and Energization Level..... | 37 |
| | D. Appendix D: List of Electric Cooperatives | 41 |

I. Executive Summary

Electric Cooperatives (ECs) are assessed quarterly to measure their compliance to the established criteria on the status of financial, technical, and institutional performance. ECs are also classified accordingly to determine the needed NEA's interventions to improve and upgrade their operations.

Assessment results for the 1st quarter of 2024 showed that 59 ECs were labeled as Green, 48 ECs as Yellow-1, 7 ECs as Yellow-2, and 7 as Red, summing up to 121 ECs evaluated. The particulars are enclosed in this report.

In relation to their financial and operational condition, 98 ECs were able to have at least one-month working capital. Additionally, 95 ECs met the 95% threshold in terms of collection efficiency with 25 ECs being 100% efficient. On their payment status to the generating companies, there were 106 ECs tagged as current and restructured- current; 98 ECs were marked as current and restructured-current on their payment status to the National Grid Corporation of the Philippines; 97 are current on their payment of loans to NEA while 94 ECs are tagged as current on their payment to Banks and other Financing Institutions (FIs). The last parameters for the financial and operational conditions showed that there were 87 ECs with a positive income and 112 ECs with positive net worth.

On the technical criteria, 96 ECs registered system loss level within the standard of 12% or below. Out of the 100 ECs, 66 were with single-digit system loss. Aside from system loss, power reliability was also measured. 109 ECs were compliant to the standard on System Average Interruption Frequency Index (SAIFI) and 115 ECs in System Average Interruption Duration Index (SAIDI) standard.

On the status of energization, 81 ECs recorded 91% and above level of electrification, of which, 10 ECs achieved 100% energization level.

Concerning the ECs' compliance on the institutional norms, 119 ECs were categorized as compliant which includes 64 ECs having 100% compliance rating.

NEA's assistance and initiatives include preparation of Operation Improvement Plan (OIP), supervision of ECs under private sector participation, and intervention of NEA to ECs such as management take-over, round table assessment, and establishment of new policies and guidelines.

II. Introduction

Overview

The Compliance Report on the Performance of Electric Cooperatives is a quarterly summary of the EC classification. It focuses on the assessment of the ECs' performance on several aspects of operations, such as, financial, operational, technical, and institutional components. The objectives of this report are to evaluate the performance of ECs; to ensure early detection of adverse financial condition; to serve as triggers for NEA intervention in the EC operation; and to institute preventive, remedial, and mitigating measures prior to being categorized as ailing EC. Likewise, Section 19 of the Implementing Rules and Regulations (IRR) of RA 10531 mandates NEA to submit quarterly compliance report to the Joint Congressional Energy Commission (JCEC) and to the Department of Energy (DOE).

This report was prepared to assess the ECs' performance during the **First Quarter of 2024**. The cut-off date on the data contained in this report was July 15, 2024. This report was approved by the NEA Board of Administrators on August 1, 2024.

NEA Policies and Guidelines

Republic Act No. 10531, Rule II, Section 5. Powers, Functions, and Privileges of NEA, states that in order to strengthen the ECs, NEA shall help them become economically viable and prepare them for the implementation of retail competition and open access pursuant to Sections 31 of the EPIRA.

Under Rule IV, Section 19, it is specified that NEA shall have the following obligations:

- a. To develop standards, and protocols for the efficient operation of the ECs;
- b. To develop financial and operational parameters to serve as triggers for intervention of the NEA;
- c. To evaluate and categorize ECs based on standards;
- d. To enforce performance standards and submit quarterly reports which shall include summary of compliances to key performance standards and recommendation for rehabilitation in case of ailing ECs;
- e. To protect the interest of the member-consumers and the public in general; and
- f. To create a NEA rehabilitation team to assist the ailing ECs improve its financial and technical conditions.

In compliance, the NEA formulated the Guidelines for the Classification of Electric Cooperatives and Provision for NEA Intervention which was approved by the NEA Board of Administrators in November 2013 and by the Department of Energy in December 2013.

After review of its adoption and implementation, the approved Guidelines for the Classification of ECs was enhanced in October 2020 to give provision for the assessment of performance parameter on System Reliability as well as their amortization payments to NEA and other financing Institutions. The Guidelines for the Declaration and Graduation of Ailing ECs were likewise adopted.

The 2020 guideline classified the ECs into the following:

- a. Green – ECs which are able to meet all the seven (7) performance standards and parameters;
- b. Yellow-1 – ECs which fail to comply with not more than three (3) key performance standards and parameters;
- c. Yellow-2 – ECs which fail to comply with four (4) or more of the key performance standards and parameters, and ECs which fall under the six (6) circumstances mentioned in Section 20 of the IRR but have not been declared as ailing ECs; and
- d. Red – ECs which have been declared as “ailing” after observance of due process.

Under RA 10531, Section 20. Ailing ECs, an EC may be declared as ailing when it falls to the following circumstances:

- a. Has negative net worth for the last three (3) years. For this purpose, “*Negative Net Worth*” shall mean as the financial condition of an EC in which its liabilities are greater than its assets;
- b. Has accumulated ninety (90) days arrearages in power supply purchases from generating companies and power suppliers/source of electricity, and the transmission charges by the Transco or its Concessionaire;
- c. Unable to provide electric service due to technical and/or financial inefficiencies, and/or institutional problems;
- d. Unable to efficiently perform its electric distribution utility obligations or continue in business due to organizational, external, and internal factors;
- e. When an EC has failed to meet other operational standards established by the NEA; and
- f. Unable to set up or continuously support its Wholesale Electricity Spot Market prudential requirements.

As part of due process, the EC may be afforded a recovery period of not more than one (1) year to undertake remedial and mitigating measures including a doable Operation Improvement Plan (OIP) to be submitted to the NEA for approval. If within a certain time, not exceeding one hundred and eighty (180) days from the implementation of the OIP, there is no sign of concrete and substantial improvement in the operational and/or financial condition of the EC, the OIP shall be set aside and become wholly inoperative and the EC shall be declared as ailing EC.

Key Performance Standards and Parameters

There are seven established standards and parameters used in the assessment of the ECs' financial and technical conditions (Table 1).

Table 1. Established Key Performance Standards and Parameters

| Parameter | Standard |
|--|---|
| Cash General Fund | At least one month working capital |
| Collection Efficiency | 95% and above |
| Payment to GENCO; NGCP; NEA and other Financial Institutions | Current/Restructured Current |
| Result of Financial Operation (Before RFSC) | Positive |
| Net Worth | Positive |
| System Loss | Within the Cap |
| System Reliability | |
| SAIFI | On-Grid – 25 interruptions per consumer per year Off-Grid – 30 interruptions per consumer per year |
| SAIDI | On-Grid – 2,700 minutes per consumer per year Off-Grid – 3,375 minutes per consumer per year |

Classification of Electric Cooperatives

For the 1st quarter of 2024, the ECs were classified as 59 Green, 48 ECs as Yellow-1, 7 ECs as Yellow-2, and 7 ECs tagged as Red (Tables 2-5).

Table 2. 2024 Q1 Green Electric Cooperatives

| 59 GREEN ELECTRIC COOPERATIVES | | | | |
|--------------------------------|-------------|-------------|-------------|------------|
| ISECO | PELCO I | CASURECO IV | CELCO | BUSECO |
| LUELCO | PENELCO | SORECO I | BOHECO I | DASURECO |
| PANELCO III | ZAMECO I | FICELCO | DORELCO | COTELCO |
| BATANELCO | ZAMECO II | ANTECO | LEYECO II | SOCOTECO I |
| CAGELCO I | FLECO | ILECO I | LEYECO III | ANECO |
| CAGELCO II | BATELEC II | ILECO II | LEYECO IV | ASELCO |
| BENECO | QUEZELCO I | NORECO I | LEYECO V | SURNECO |
| IFELCO | QUEZELCO II | BANELCO | SOLECO | SIARELCO |
| MOPRECO | LUBELCO | CEBECO I | SAMELCO I | DIELCO |
| NEECO II – Area 1 | ORMECO | CEBECO II | ZAMSURECO I | SURSECO I |
| NEECO II – Area 2 | BISELCO | CEBECO III | MORESCO I | SURSECO II |
| PRESCO | CANORECO | PROSIELCO | MORESCO II | |

Table 3. 2024 Q1 Yellow-1 Electric Cooperatives

| 48 YELLOW-1 ELECTRIC COOPERATIVES | | | | |
|--|------------|--------------|------------|-----------|
| INEC | TARELCO II | PALECO | NONECO | MOELCI I |
| PANELCO I | NEECO I | CASURECO I | CENECO | MOELCI II |
| CENPELCO | SAJELCO | CASURECO II | NOCECO | CAMELCO |
| ISELCO I | PELCO II | CASURECO III | NORECO II | LANECO |
| ISELCO II | PELCO III | SORECO II | BOHECO II | NORDECO |
| NUVELCO | BATELEC I | TISELCO | BILECO | SUKELCO |
| QUIRELCO | OMECO | AKELCO | NORSAMELCO | SIASELCO |
| KAELCO | MARELCO | CAPELCO | SAMELCO II | CASELCO |
| AURELCO | TIELCO | ILECO III | ESAMELCO | |
| TARELCO I | ROMELCO | GUIMELCO | ZANECO | |

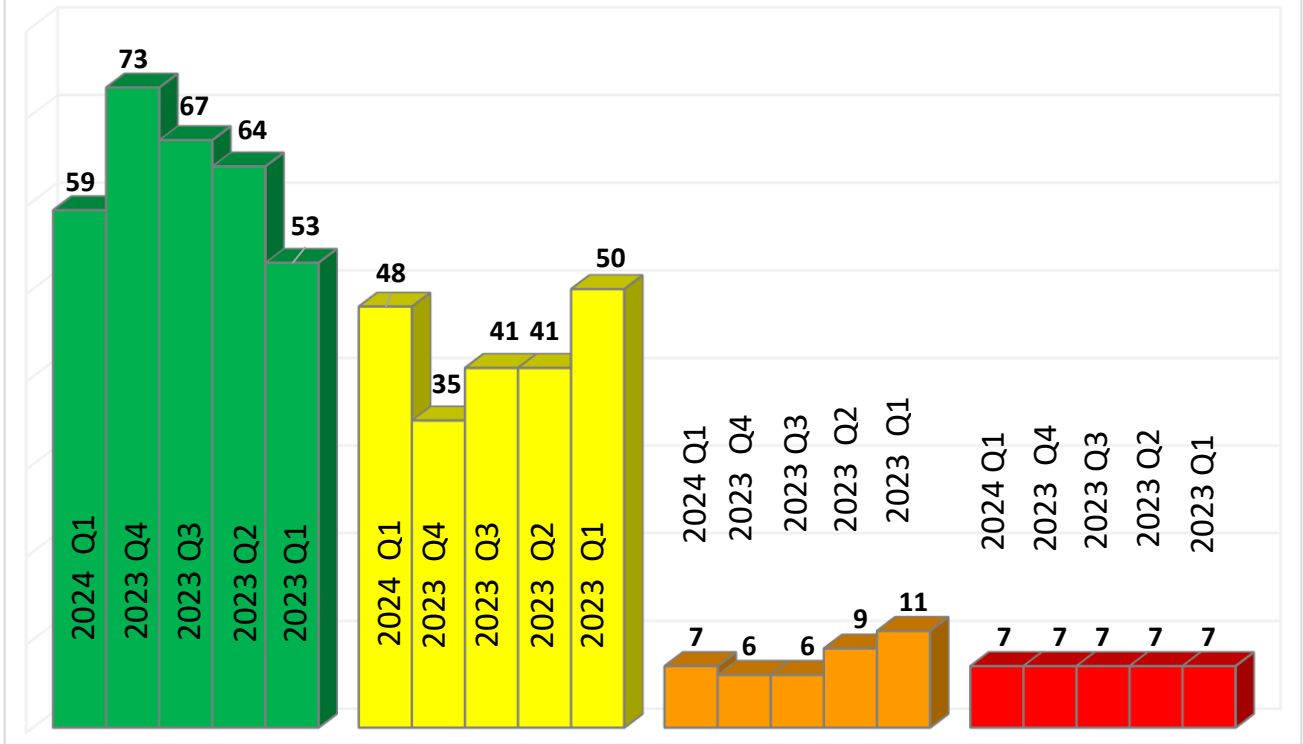
Table 4. 2024 Q1 Yellow-2 Electric Cooperatives

| 7 YELLOW-2 ELECTRIC COOPERATIVES | | | |
|---|--------|----------------|---------|
| ZAMSURECO II | FIBECO | COTELCO-PPALMA | MAGELCO |
| ZAMCELCO | DORECO | SOCOTECO II | |

Table 5. 2024 Q1 Red Electric Cooperatives

| 7 RED ELECTRIC COOPERATIVES | | | |
|------------------------------------|---------|---------|----------|
| ABRECO | MASELCO | SULECO | LASURECO |
| ALECO | TAWELCO | BASELCO | |

Graph 1. 2024 Q1 vs. 2023 Q1 Color Classification of Electric Cooperatives



The number of Green ECs continues to vary for the last five quarters (Graph 1). Among the three island groups, Luzon, Visayas, and Mindanao, ECs under Visayas performed significantly well, as all their ECs were classified as either Green or Yellow-1 (Graph 2).

Graph 2. 2024 Q1 Color Classification of Electric Cooperatives (Per Island Group)

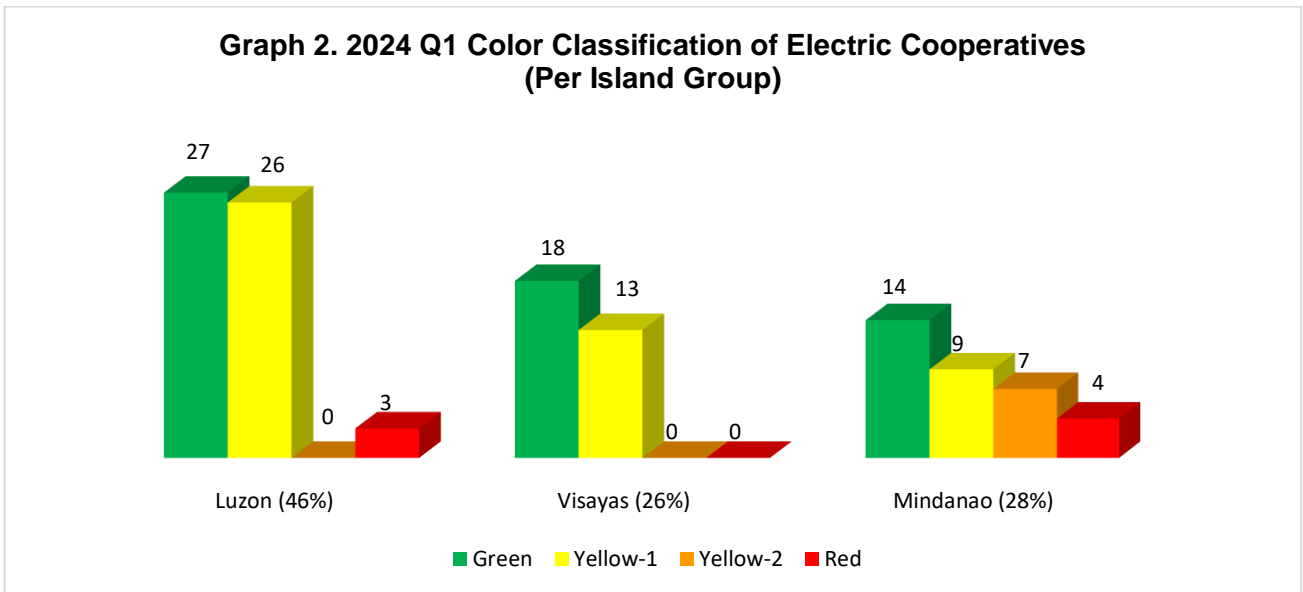


Table 6. 2024 Q1 vs. 2023 Q1 Color Classification of Electric Cooperatives (Per Region)

| Electric Cooperatives | 2024 Q1 | 2023 Q4 | 2023 Q3 | 2023 Q2 | 2023 Q1 |
|------------------------------|----------------|----------------|----------------|----------------|----------------|
| Region I | | | | | |
| INEC | Yellow-1 | Green | Green | Yellow-1 | Yellow-1 |
| ISECO | Green | Green | Green | Green | Green |
| LUELCO | Green | Green | Green | Green | Green |
| PANELCO I | Yellow-1 | Yellow-1 | Yellow-1 | Yellow-1 | Yellow-1 |
| CENPELCO | Yellow-1 | Yellow-1 | Yellow-1 | Yellow-1 | Yellow-1 |
| PANELCO III | Green | Green | Green | Green | Green |
| Region II | | | | | |
| BATANELCO | Green | Green | Yellow-1 | Yellow-1 | Yellow-1 |
| CAGELCO I | Green | Green | Green | Green | Yellow-1 |
| CAGELCO II | Green | Green | Green | Green | Yellow-1 |
| ISELCO I | Yellow-1 | Yellow-1 | Green | Green | Yellow-1 |
| ISELCO II | Yellow-1 | Yellow-1 | Yellow-1 | Yellow-1 | Yellow-2 |
| NUVELCO | Yellow-1 | Yellow-1 | Yellow-1 | Yellow-1 | Yellow-1 |
| QUIRELCO | Yellow-1 | Green | Green | Yellow-1 | Yellow-1 |
| CAR | | | | | |
| ABRECO | Red | Red | Red | Red | Red |
| BENECO | Green | Green | Green | Green | Green |
| IFELCO | Green | Yellow-1 | Yellow-1 | Yellow-1 | Yellow-1 |
| KAELCO | Yellow-1 | Yellow-1 | Yellow-1 | Yellow-1 | Yellow-1 |
| MOPRECO | Green | Green | Green | Green | Green |
| Region III | | | | | |
| AURELCO | Yellow-1 | Green | Green | Green | Green |
| TARELCO I | Yellow-1 | Yellow-1 | Yellow-1 | Yellow-1 | Yellow-1 |
| TARELCO II | Yellow-1 | Yellow-1 | Green | Green | Green |
| NEECO I | Yellow-1 | Green | Green | Green | Green |
| NEECO II - AREA 1 | Green | Green | Green | Green | Green |
| NEECO II - AREA 2 | Green | Yellow-1 | Green | Green | Green |
| SAJELCO | Yellow-1 | Green | Green | Green | Green |
| PRESCO | Green | Yellow-1 | Yellow-1 | Green | Yellow-1 |
| PELCO I | Green | Green | Green | Green | Green |
| PELCO II | Yellow-1 | Green | Yellow-1 | Yellow-1 | Yellow-1 |
| PELCO III | Yellow-1 | Yellow-1 | Yellow-1 | Yellow-1 | Yellow-1 |
| PENELCO | Green | Green | Green | Green | Green |
| ZAMECO I | Green | Green | Green | Green | Green |
| ZAMECO II | Green | Green | Green | Green | Green |

Table 6. (Continued)

| Electric Cooperatives | 2024 Q1 | 2023 Q4 | 2023 Q3 | 2023 Q2 | 2023 Q1 |
|------------------------------|----------------|----------------|----------------|----------------|----------------|
| Region IV-A | | | | | |
| FLECO | Green | Green | Green | Green | Yellow-1 |
| BATELEC I | Yellow-1 | Green | Green | Green | Yellow-1 |
| BATELEC II | Green | Green | Green | Green | Yellow-1 |
| QUEZELCO I | Green | Green | Green | Green | Yellow-1 |
| QUEZELCO II | Green | Green | Green | Green | Green |
| Region IV-B | | | | | |
| LUBELCO | Green | Green | Green | Green | Green |
| OMEKO | Yellow-1 | Yellow-1 | Yellow-1 | Yellow-1 | Yellow-1 |
| ORMECO | Green | Green | Green | Yellow-1 | Green |
| MARELCO | Yellow-1 | Yellow-1 | Yellow-1 | Yellow-1 | Yellow-1 |
| TIELCO | Yellow-1 | Green | Green | Green | Yellow-1 |
| ROMELCO | Yellow-1 | Green | Yellow-1 | Yellow-1 | Yellow-1 |
| BISELCO | Green | Green | Yellow-1 | Green | Green |
| PALECO | Yellow-1 | Yellow-1 | Yellow-1 | Yellow-1 | Yellow-2 |
| Region V | | | | | |
| CANORECO | Green | Green | Green | Green | Green |
| CASURECO I | Yellow-1 | Green | Green | Yellow-1 | Yellow-1 |
| CASURECO II | Yellow-1 | Yellow-1 | Yellow-1 | Yellow-1 | Yellow-1 |
| CASURECO III | Yellow-1 | Yellow-1 | Yellow-1 | Yellow-1 | Yellow-1 |
| CASURECO IV | Green | Green | Green | Green | Green |
| ALECO | Red | Red | Red | Red | Red |
| SORECO I | Green | Yellow-1 | Yellow-1 | Yellow-1 | Yellow-1 |
| SORECO II | Yellow-1 | Green | Green | Yellow-1 | Green |
| FICELCO | Green | Green | Green | Green | Green |
| MASELCO | Red | Red | Red | Red | Red |
| TISELCO | Yellow-1 | Yellow-2 | Yellow-2 | Yellow-2 | Yellow-2 |
| Region VI | | | | | |
| AKELCO | Yellow-1 | Yellow-1 | Green | Yellow-1 | Yellow-1 |
| ANTECO | Green | Green | Green | Green | Green |
| CAPELCO | Yellow-1 | Green | Green | Green | Green |
| ILECO I | Green | Green | Green | Yellow-1 | Green |
| ILECO II | Green | Green | Green | Green | Green |
| ILECO III | Yellow-1 | Green | Green | Green | Green |
| GUIMELCO | Yellow-1 | Yellow-1 | Yellow-1 | Green | Green |
| NONECO | Yellow-1 | Yellow-1 | Yellow-1 | Yellow-1 | Yellow-1 |
| CENECO | Yellow-1 | Yellow-1 | Yellow-1 | Green | Yellow-1 |
| NOCECO | Yellow-1 | Green | Green | Green | Yellow-1 |

Table 6. (Continued)

| Electric Cooperatives | 2024 Q1 | 2023 Q4 | 2023 Q3 | 2023 Q2 | 2023 Q1 |
|------------------------------|----------------|----------------|----------------|----------------|----------------|
| Region VII | | | | | |
| NORECO I | Green | Green | Green | Green | Green |
| NORECO II | Yellow-1 | Green | Green | Green | Yellow-1 |
| BANELCO | Green | Green | Green | Green | Green |
| CEBECO I | Green | Green | Green | Green | Green |
| CEBECO II | Green | Green | Green | Green | Green |
| CEBECO III | Green | Green | Green | Green | Green |
| PROSIELCO | Green | Green | Green | Yellow-1 | Green |
| CELCO | Green | Green | Green | Yellow-1 | Yellow-1 |
| BOHECO I | Green | Green | Green | Green | Green |
| BOHECO II | Yellow-1 | Green | Yellow-1 | Yellow-1 | Yellow-1 |
| Region VIII | | | | | |
| DORELCO | Green | Yellow-1 | Yellow-1 | Yellow-1 | Yellow-1 |
| LEYECO II | Green | Green | Green | Green | Green |
| LEYECO III | Green | Green | Green | Green | Green |
| LEYECO IV | Green | Green | Green | Green | Green |
| LEYECO V | Green | Green | Green | Green | Yellow-1 |
| SOLECO | Green | Green | Green | Green | Green |
| BILECO | Yellow-1 | Green | Yellow-1 | Yellow-1 | Green |
| NORSAMELCO | Yellow-1 | Green | Green | Green | Yellow-1 |
| SAMELCO I | Green | Green | Green | Green | Green |
| SAMELCO II | Yellow-1 | Green | Green | Green | Green |
| ESAMELCO | Yellow-1 | Green | Yellow-1 | Green | Green |
| Region IX | | | | | |
| ZANECO | Yellow-1 | Green | Green | Yellow-1 | Yellow-1 |
| ZAMSURECO I | Green | Green | Green | Green | Green |
| ZAMSURECO II | Yellow-2 | Yellow-2 | Yellow-2 | Yellow-2 | Yellow-2 |
| ZAMCELCO | Yellow-2 | Yellow-2 | Yellow-2 | Yellow-2 | Yellow-2 |
| Region X | | | | | |
| MOELCI I | Yellow-1 | Yellow-1 | Yellow-1 | Yellow-1 | Yellow-2 |
| MOELCI II | Yellow-1 | Green | Yellow-1 | Yellow-1 | Yellow-1 |
| MORESCO I | Green | Green | Yellow-1 | Green | Yellow-1 |
| MORESCO II | Green | Green | Yellow-1 | Yellow-1 | Yellow-1 |
| FIBECO | Yellow-2 | Yellow-2 | Yellow-2 | Yellow-2 | Yellow-2 |
| BUSECO | Green | Green | Green | Green | Green |
| CAMELCO | Yellow-1 | Yellow-1 | Yellow-1 | Yellow-2 | Yellow-1 |
| LANECO | Yellow-1 | Yellow-1 | Yellow-1 | Yellow-1 | Yellow-1 |

Table 6. (Continued)

| Electric Cooperatives | 2024 Q1 | 2023 Q4 | 2023 Q3 | 2023 Q2 | 2023 Q1 |
|------------------------------|----------------|----------------|----------------|----------------|----------------|
| Region XI | | | | | |
| DORECO | Yellow-2 | Yellow-1 | Yellow-1 | Yellow-1 | Yellow-1 |
| NORDECO | Yellow-1 | Yellow-1 | Yellow-1 | Yellow-1 | Yellow-2 |
| DASURECO | Green | Green | Green | Green | Green |
| Region XII | | | | | |
| COTELCO | Green | Yellow-1 | Green | Green | Green |
| COTELCO-PPALMA | Yellow-2 | Yellow-1 | Yellow-1 | Yellow-1 | Green |
| SOCOTECO I | Green | Green | Green | Green | Green |
| SOCOTECO II | Yellow-2 | Yellow-1 | Yellow-1 | Yellow-2 | Yellow-1 |
| SUKELCO | Yellow-1 | Green | Yellow-1 | Yellow-1 | Yellow-1 |
| BARMM | | | | | |
| TAWELCO | Red | Red | Red | Red | Red |
| SIASELCO | Yellow-1 | Yellow-1 | Yellow-1 | Yellow-2 | Yellow-2 |
| SULECO | Red | Red | Red | Red | Red |
| BASELCO | Red | Red | Red | Red | Red |
| CASELCO | Yellow-1 | Yellow-2 | Yellow-2 | Yellow-2 | Yellow-2 |
| LASURECO | Red | Red | Red | Red | Red |
| MAGELCO | Yellow-2 | Yellow-2 | Yellow-2 | Yellow-2 | Yellow-2 |
| Region XIII | | | | | |
| ANECO | Green | Green | Green | Green | Green |
| ASELCO | Green | Yellow-1 | Green | Green | Green |
| SURNECO | Green | Yellow-1 | Yellow-1 | Yellow-1 | Yellow-1 |
| SIARELCO | Green | Green | Green | Green | Green |
| DIELCO | Green | Green | Green | Green | Green |
| SURSECO I | Green | Green | Green | Green | Yellow-1 |
| SURSECO II | Green | Green | Green | Yellow-1 | Yellow-1 |

Sorted by region, comparative analysis of the classification of ECs are also presented (Table 6).

III. Compliance to Key Performance Standards and Parameters

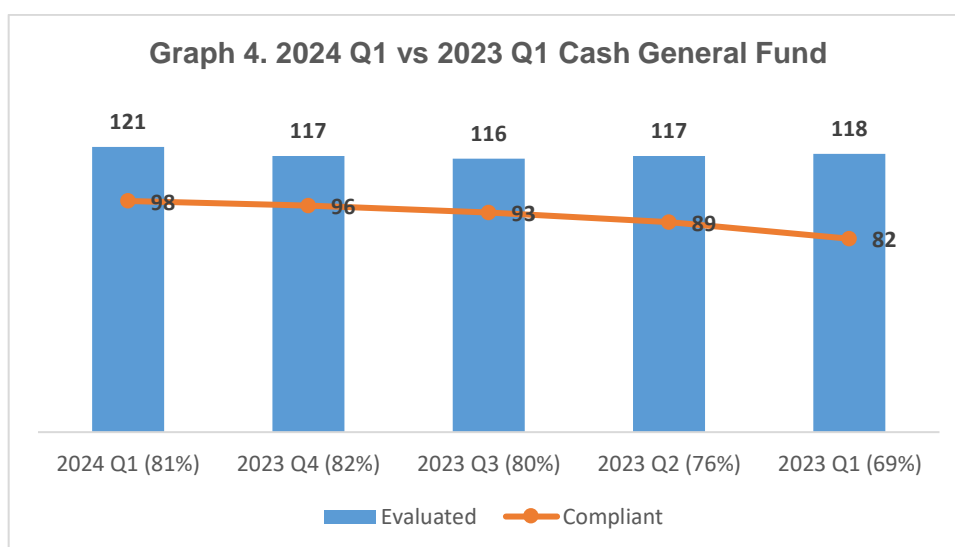
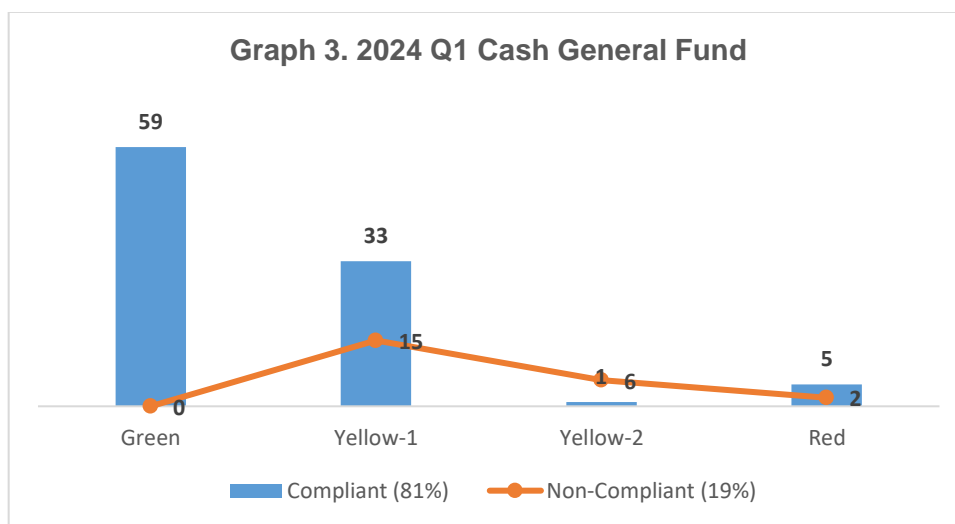
A. Financial and Operational Standards and Parameters

There are five financial and operational standards and parameters used in the classification of ECs. The performance of the ECs is presented in comparison with their performance from the previous year. ECs with incomplete submission or no submission were not evaluated. For specifics, go to Appendix A.

Cash General Fund

This parameter measures the ability of an EC to continue their daily operation for a span of one month. An EC is considered compliant by maintaining a higher working capital fund against the one-month working capital requirement.

Among the 121 ECs that evaluated, 98 ECs are assessed as with the standard compliant (Graph 3).

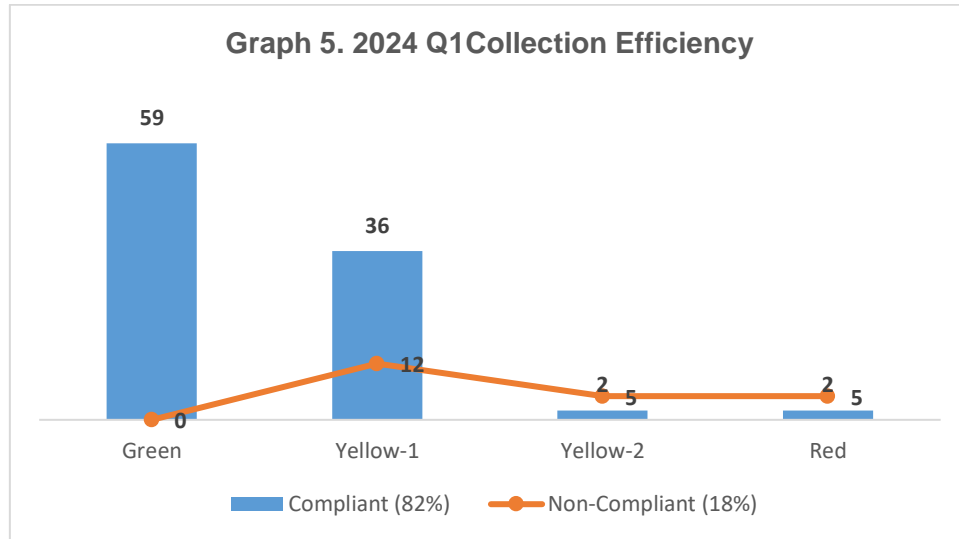


Comparing 1st quarter of 2024 performance to 1st quarter 2023 results, there was an increase of 3 ECs evaluated, and an increase in number of compliant ECs from 82 to 98 (Graph 4).

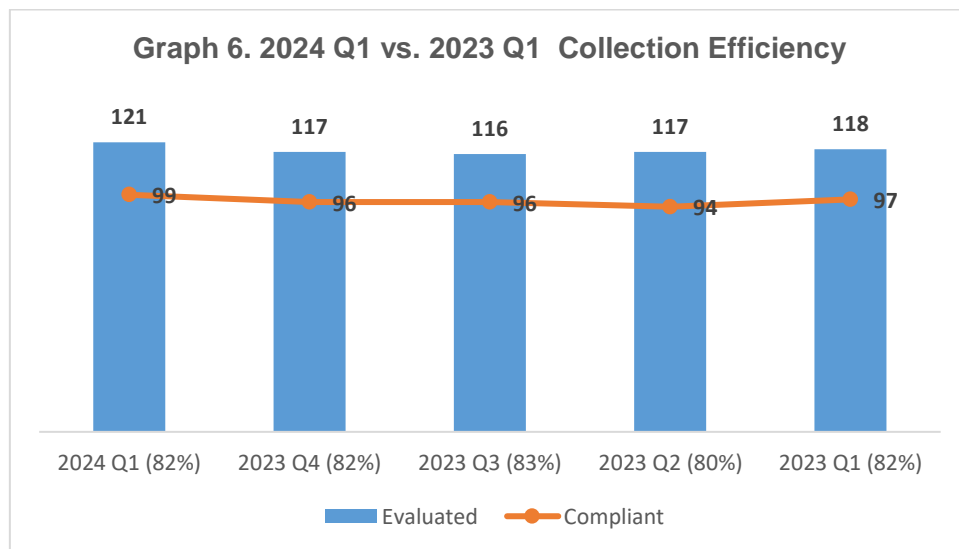
Collection Efficiency

An EC's collection efficiency refers to its capability to collect its corresponding consumer accounts receivables. The standard level is 95%.

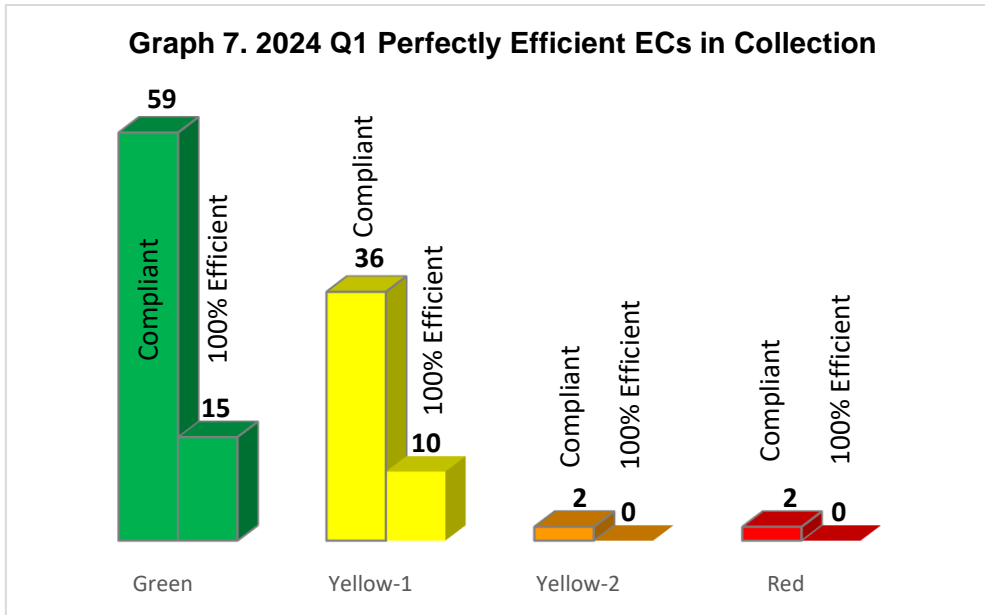
Of the 121 ECs, that were assessed, 99 ECs were able to collect at least 95% of its consumer accounts receivables (Graph 5).



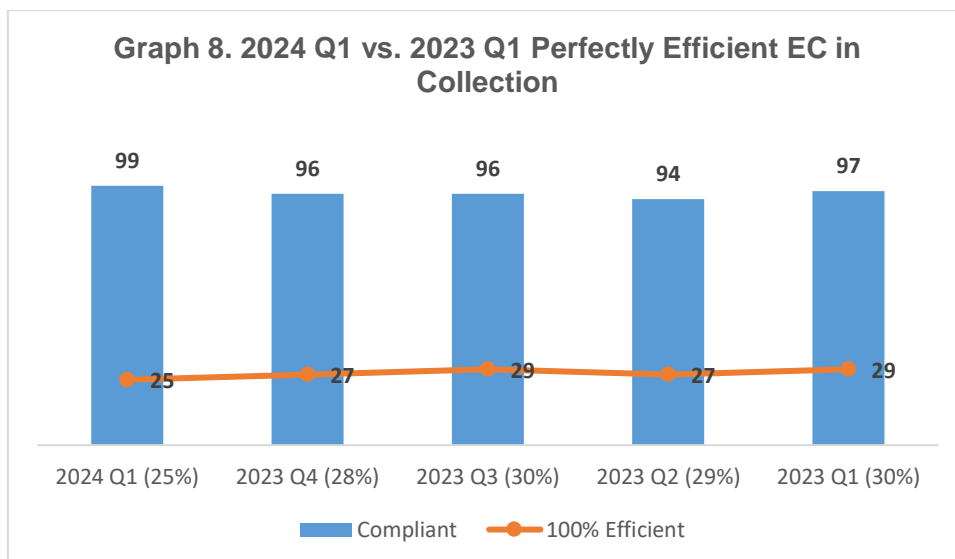
There was an increase of 2 compliant ECs in 1st quarter of 2024 as compared to the same quarter in 2023 the same compliance rating of 82%. (Graph 6).



Out of the 99 compliant ECs in the 1st quarter of 2024, 25 were 100% efficient in their collection of accounts receivables. (Graph 7)



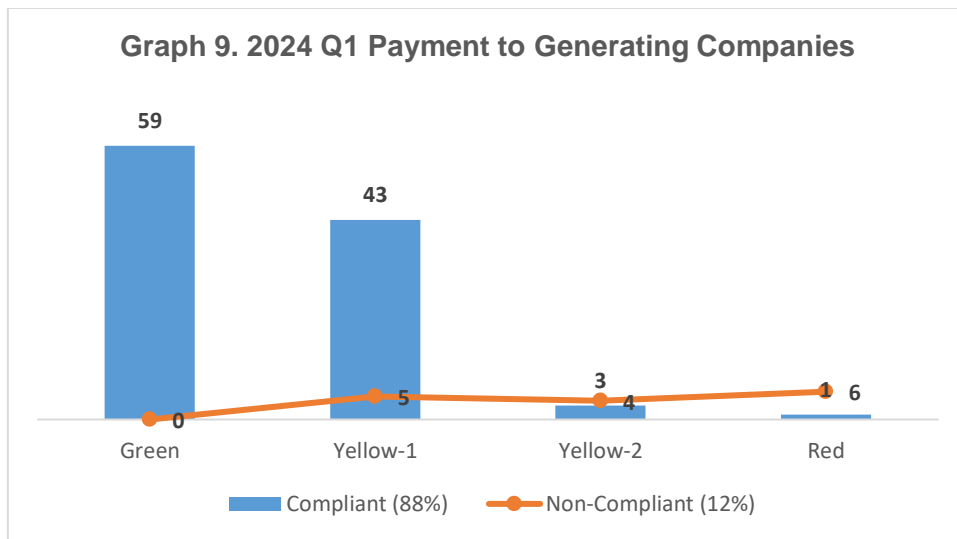
There is a decrease of 4 compliant ECs with 100% collection efficiency in the 1st quarter of 2024 as compared with the same quarter of 2023. (Graph 8)



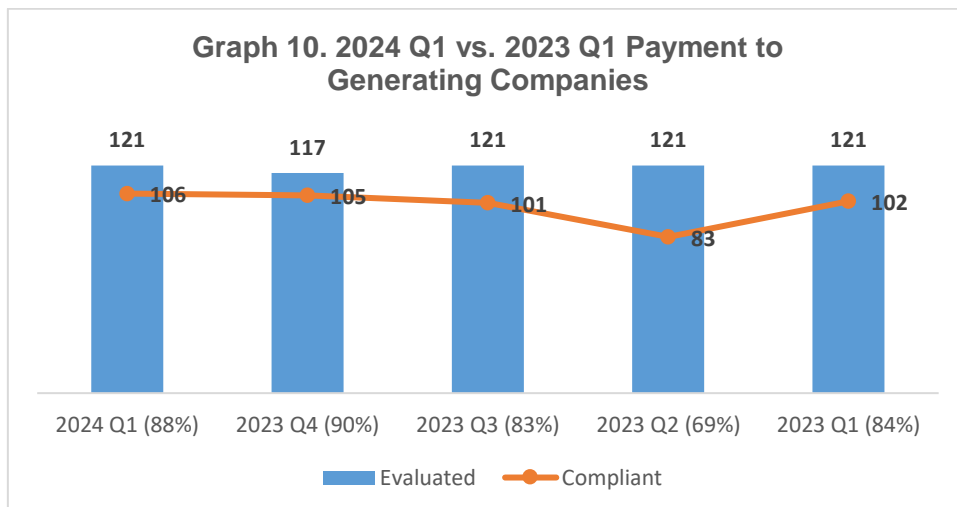
Payment to Generating Companies and NGCP

This condition denotes that an EC is compliant if it is able to pay its power accounts to Generation Companies (GENCO), and its transmission bills to National Grid Corporation of the Philippines (NGCP). A status of “Current” or “Restructured- Current” indicates the capacity of an EC to pay its fees on time. On the other hand, “Arrears” or “Restructured Arrears” shows the inability of an EC to pay its dues regularly.

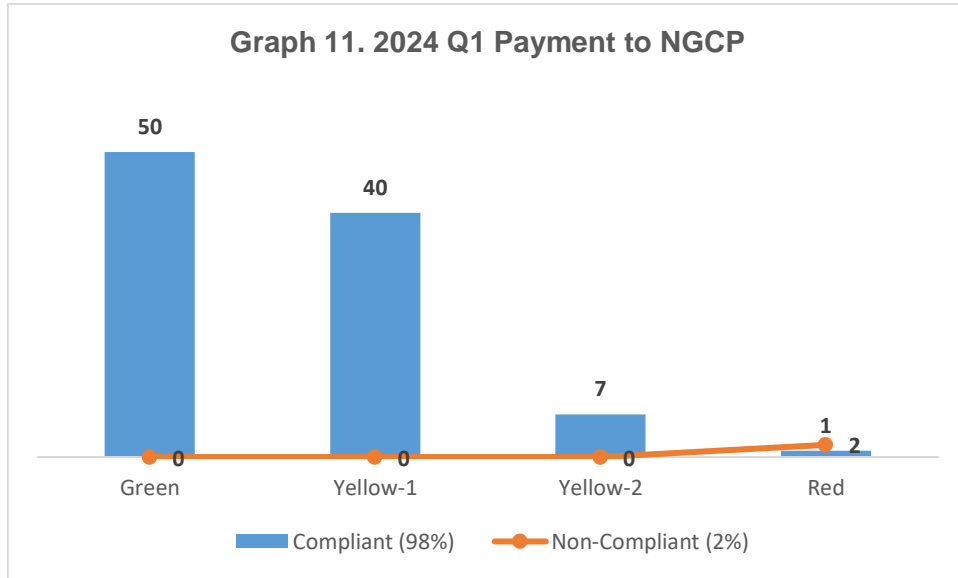
Out of 121 ECs that were evaluated for their payment to Generation Companies, 106 or 88% were with “Current” or “Restructured - Current” status, marking them as compliant (Graph 9).



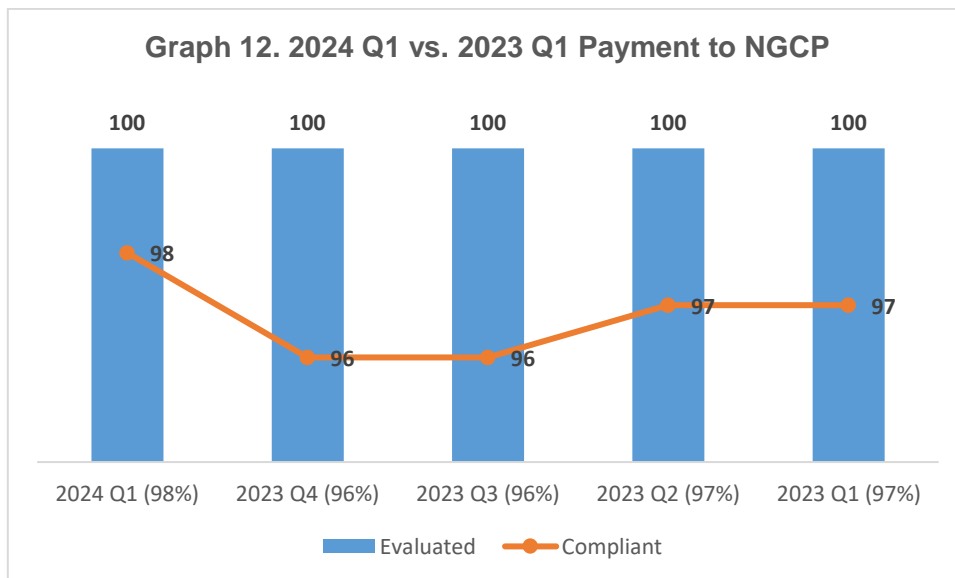
There was an increase of 4 compliant ECs in 1st quarter of 2024 as compared with 1st quarter of 2023. (Graph 10).



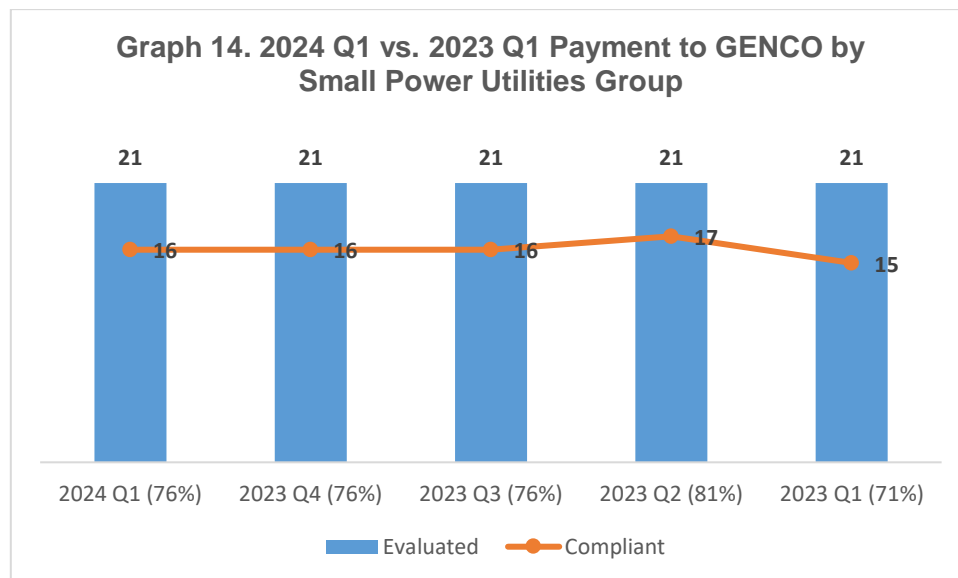
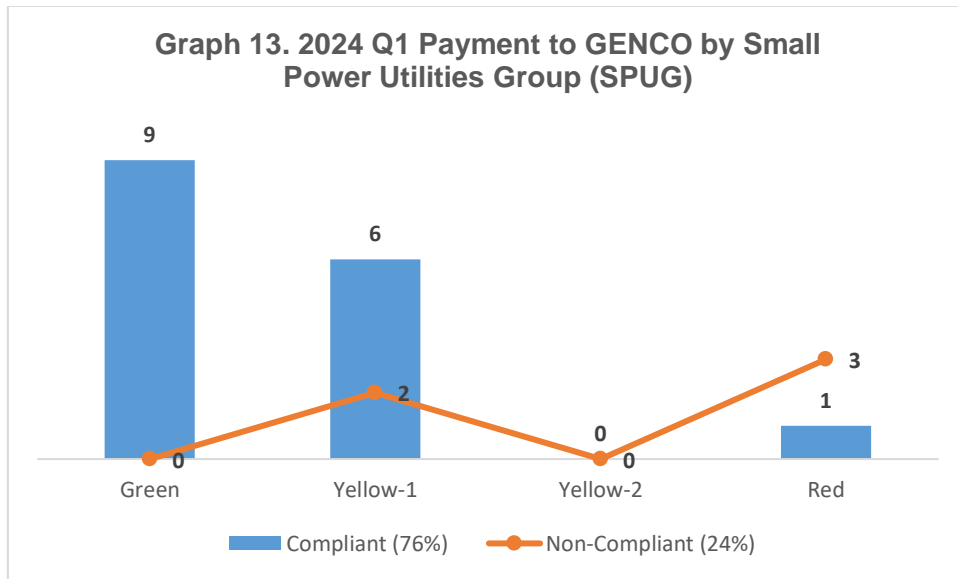
Concerning their payments to NGCP, 98 ECs were identified as compliant for the first quarter of this year (Graph 11). Graph 12 illustrates a compliance rate at 98% for the last quarter.



*Excludes 21 SPUG ECs



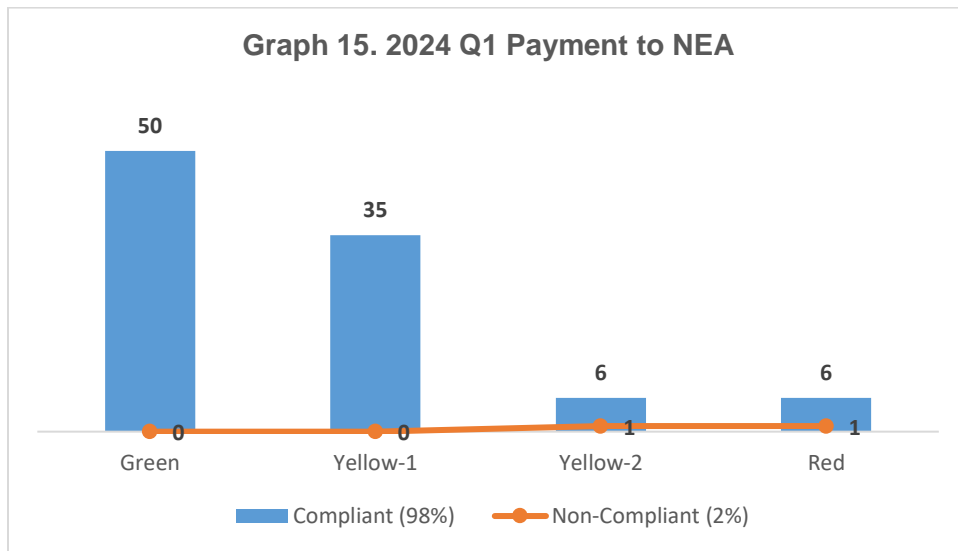
Of the 121 ECs, 21 are labeled as Small Power Utilities Group (SPUG) or off-grid ECs. All 21 SPUG ECs underwent evaluation, with 16 ECs, or 76%, assessed as compliant (Graph 13). The compliance level stayed constant at 76% from the 3rd quarter of 2023 to 1st quarter of 2024. (Graph 14).



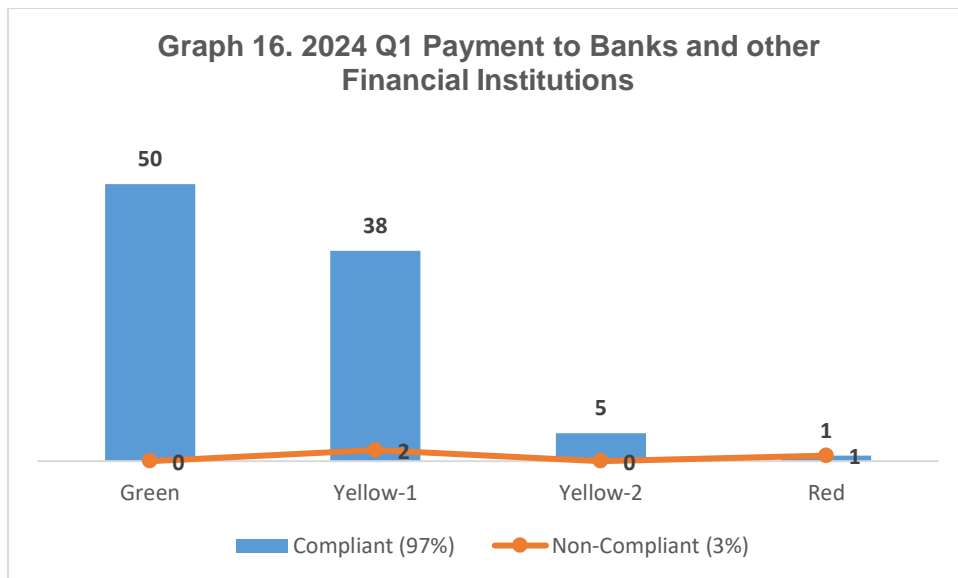
Payment to Financial Institutions (NEA, Banks and other FIs)

This parameter was included in the 2020 Policy for the Classification of ECs to monitor and measure compliance of ECs on their payment of financial obligations to NEA, Banks and other Financial Institutions (FIs). ECs are marked as “Current” or “Restructured- Current” if they are able to pay their amortizations on time. Contrastively, “Arrears” or “Restructured Arrears” shows the inability of an EC to pay its obligations promptly.

Out of the 121 ECs, 99 ECs were assessed on their payment to NEA and the result was 97 ECs were current on their payments while 2 ECs were in arrears or they were not able to pay their obligations on time (Graph 15). 22 ECs were identified to have no loans with NEA.

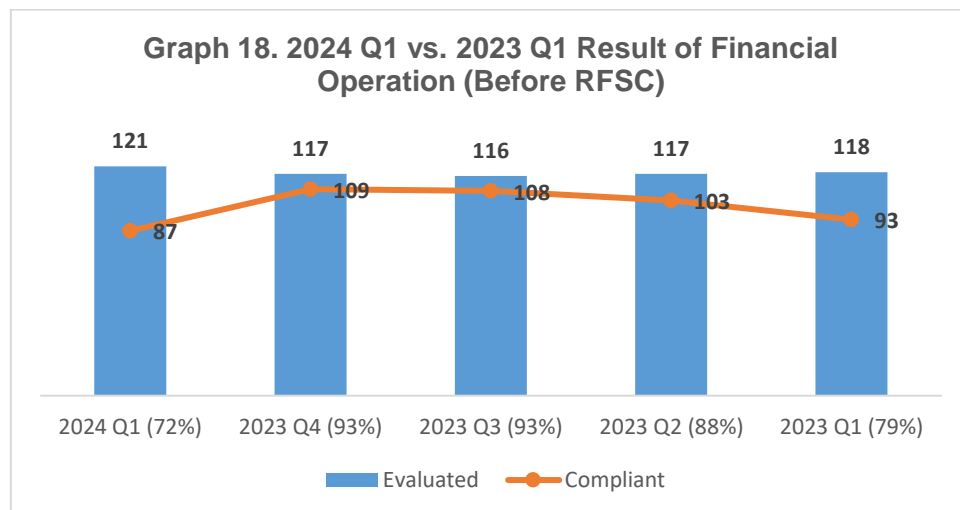
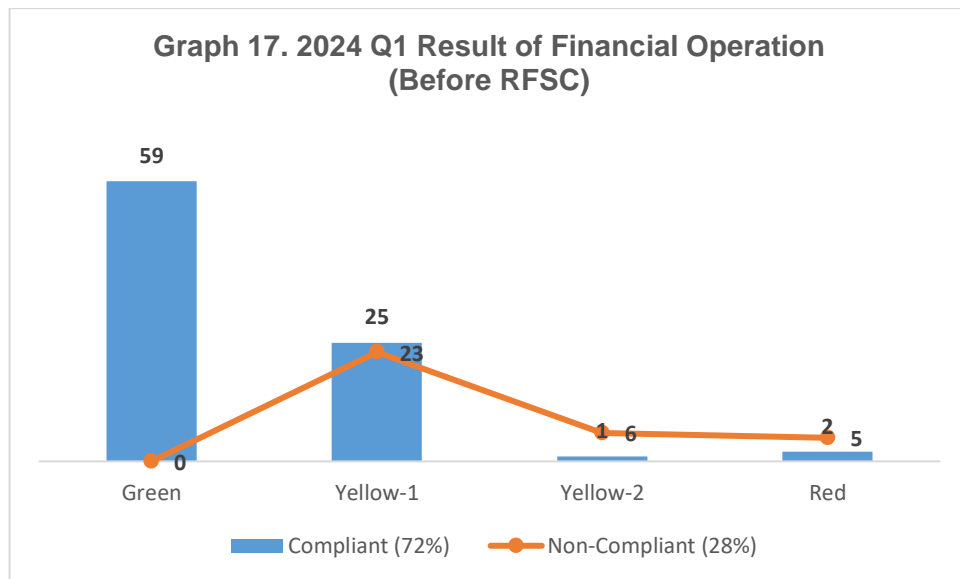


On payment to Banks and other Financial Institutions, out of 121 ECs, 97 ECs were assessed and the result showed that 94 ECs were able to pay their financial obligations (Graph 16). 24 ECs were identified to have no loans with banks and other FIs for the 1st quarter of 2024.



Result of Financial Operation (Before RFSC)

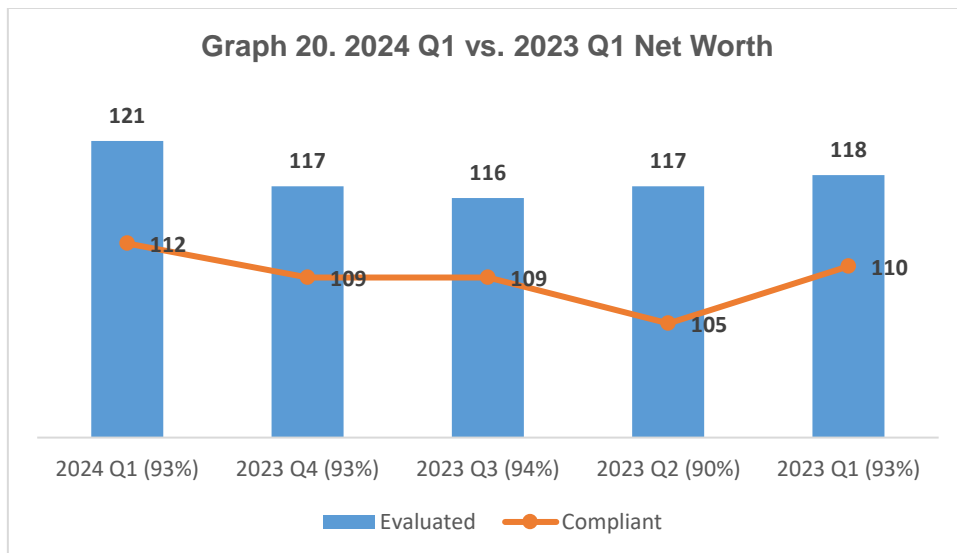
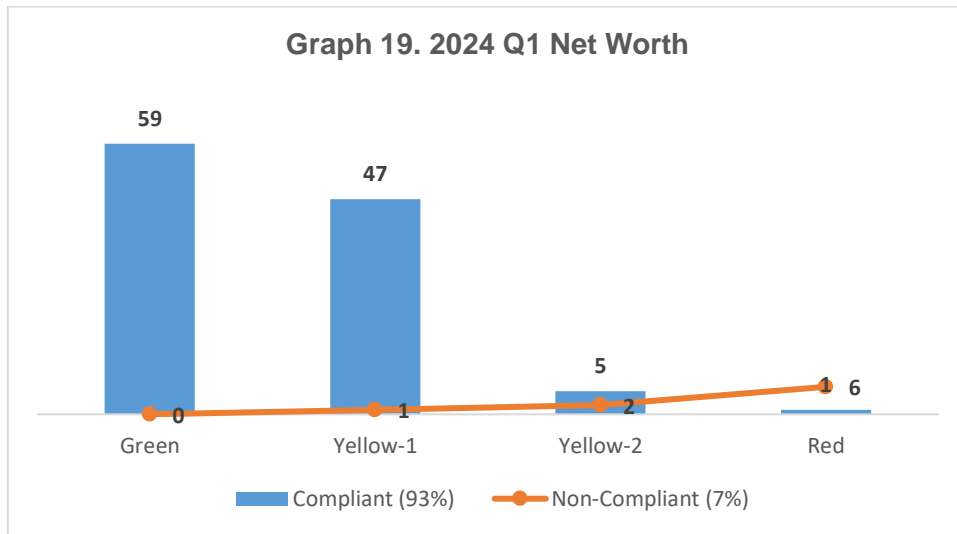
This parameter states the net revenue after deducting all costs and expenses to the total revenue. A positive financial status makes an EC compliant after assessment of performance.



Out of the 121 evaluated ECs, 87 were compliant, most of which were Green and Yellow-1 ECs (Graph 17). The level of compliance continues to vary throughout the quarters with a decrease of 6 ECs for 1st quarter of 2024 as compared to 1st quarter of 2023. (Graph 18)

Net Worth

An EC's net worth presents its overall financial state. It refers to the total value of assets after total liabilities. A compliant EC has positive net worth, the condition that assets outweighs the liabilities.



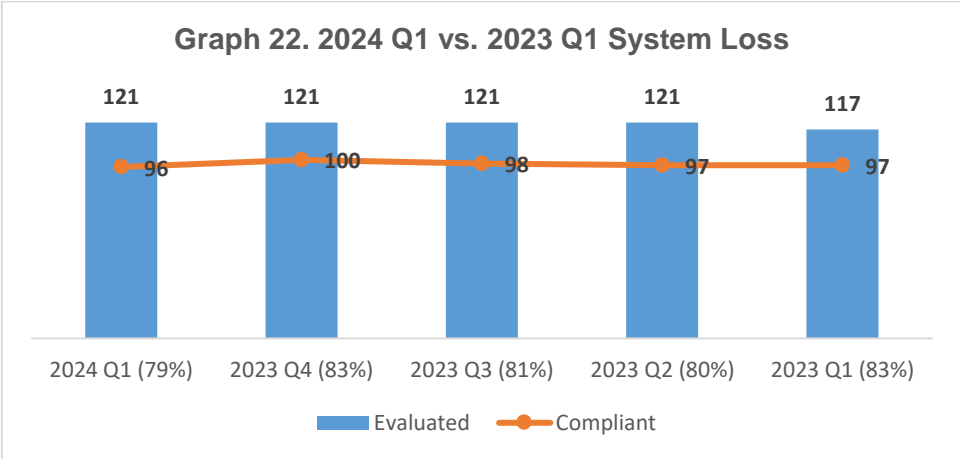
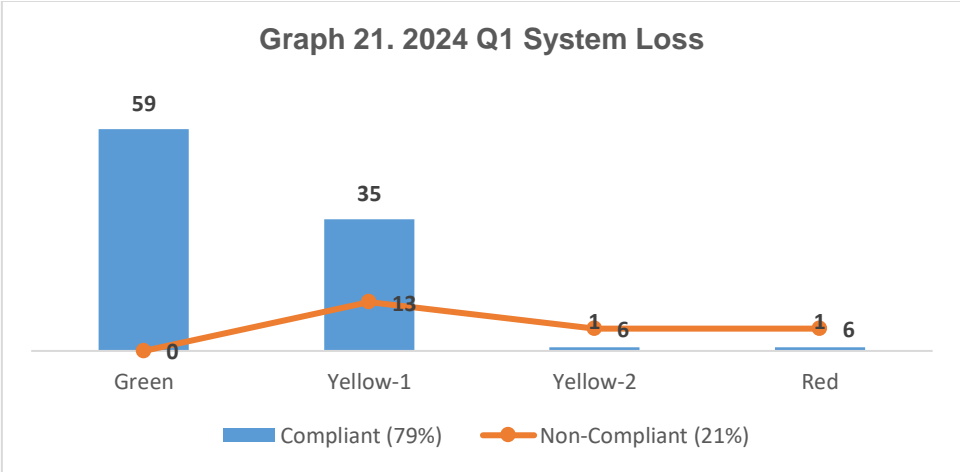
For the ECs' net worth, 112 out of 121 ECs evaluated have a positive net worth for the 2024 1st quarter financial operations (Graph 19). The level of compliance continues to vary from 1st quarter of 2023 to 1st quarter of 2024 and there is an increase of 3 compliant ECs from 4th quarter 2023 to 1st quarter of 2024 (Graph 20).

B. Technical Standards and Parameters

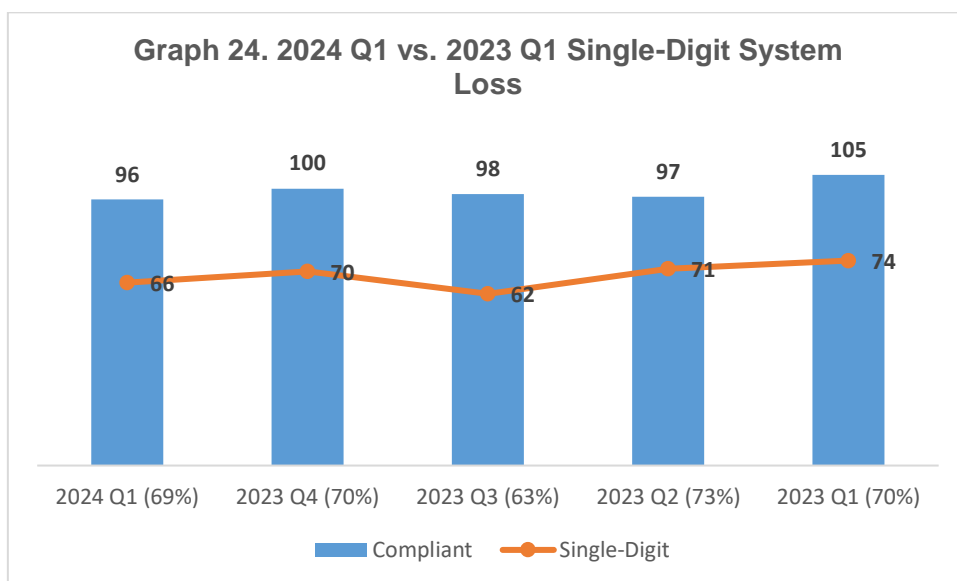
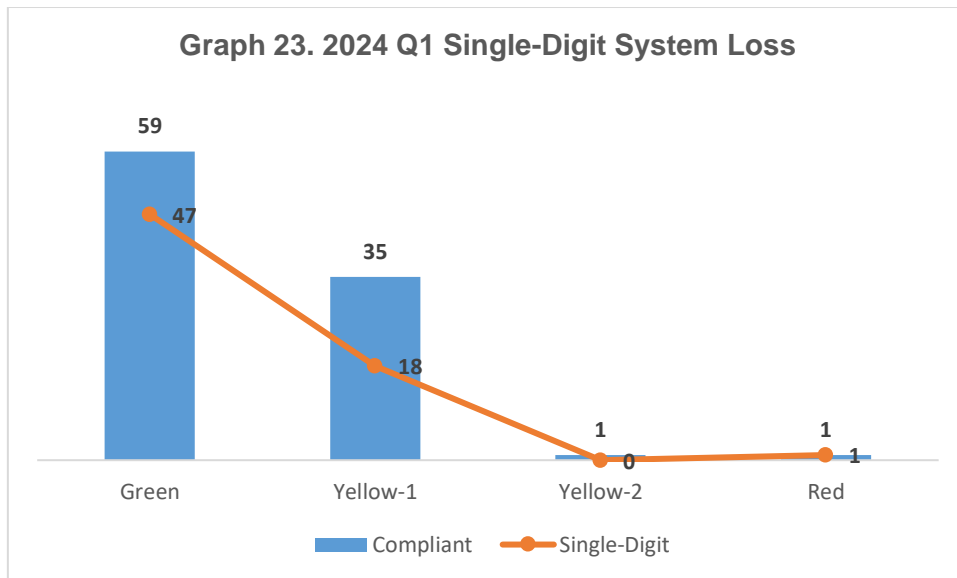
For the technical standards and parameters, two conditions are being considered, system efficiency and power reliability. In classifying ECs based on efficiency, only system loss is being utilized and for power reliability, the System Average Interruption Frequency Index (SAIFI) and System Average Interruption Duration Index (SAIDI). The performance of the ECs is presented in comparison to their performance from the previous year. ECs with incomplete submission or no submission were not evaluated. For system loss percentages, refer to Appendix A and for power reliability values, refer to Appendix B.

System Loss

This parameter measures the difference between energy input and energy output. It indicates the efficiency of the ECs' distribution system. The standard used for 2024 is 12%.



All 121 ECs were evaluated and 96 were found to be compliant with the standard (Graph 21). Comparing the 2023 and 2024 1st quarter performance, the number of retain compliant ECs decreased with 97 in 2023 1st quarter as compared to 96 in 2024 1st quarter. (Graph 22)



While there is an increase in the compliant ECs, the number of the remaining cooperatives persist in enhancing their distribution systems, striving to minimize losses to achieve the single-digit levels (Graph 23). The number of compliant ECs decreased by 9 in the 1st quarter of 2024 as compared to 1st quarter of 2023. Likewise, the coops which attained single-digit decreased by 4 from previous quarter (Graph 24).

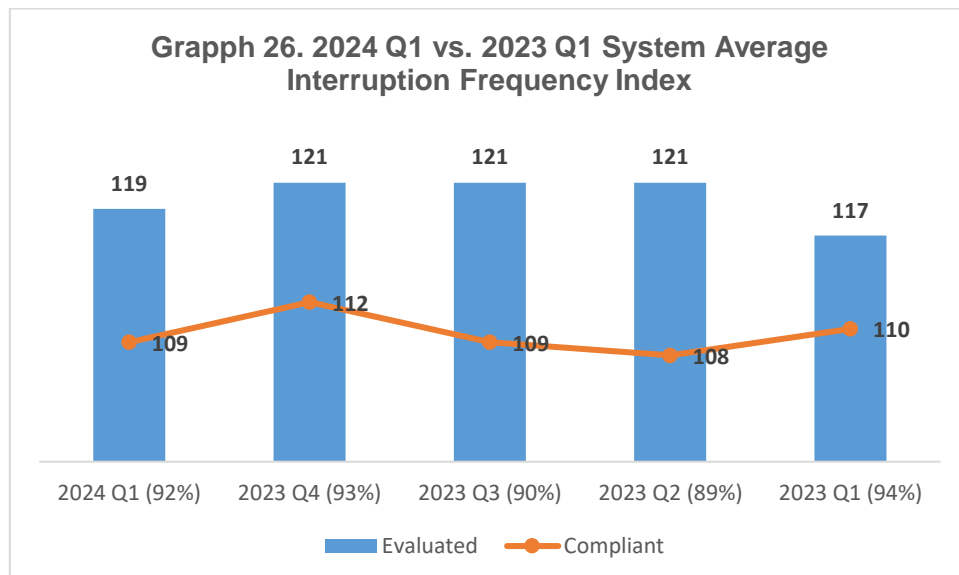
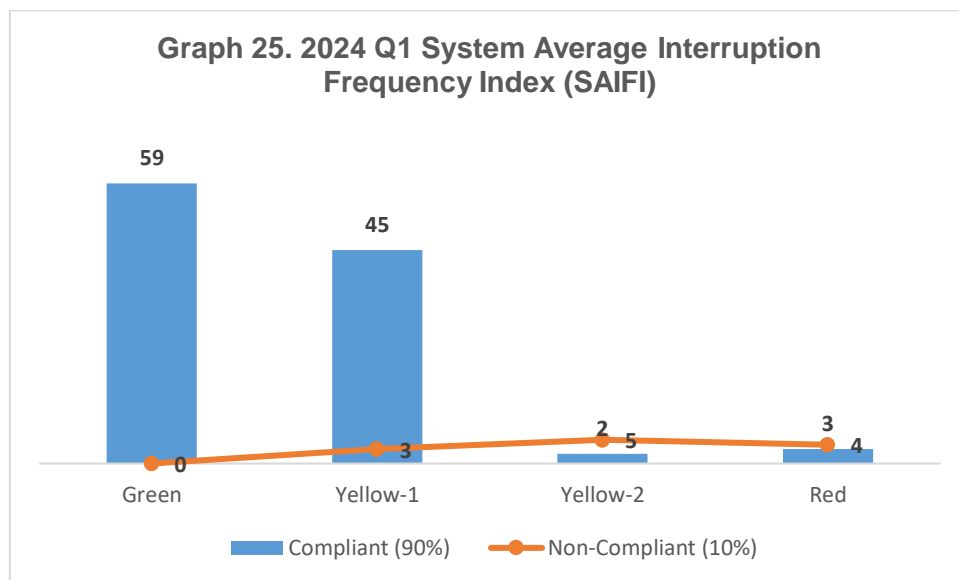
Power Reliability

The electric cooperatives' ability to meet the electricity needs of the end-users is measured by these parameters.

System Average Interruption Frequency Index (SAIFI)

This parameter is defined as the total number of sustained customer power interruptions within a given period divided by the total number of customers served within the same period. For on-grid ECs, the standard is 25 interruptions per consumer per year while for off-grid ECs, 30 interruptions.

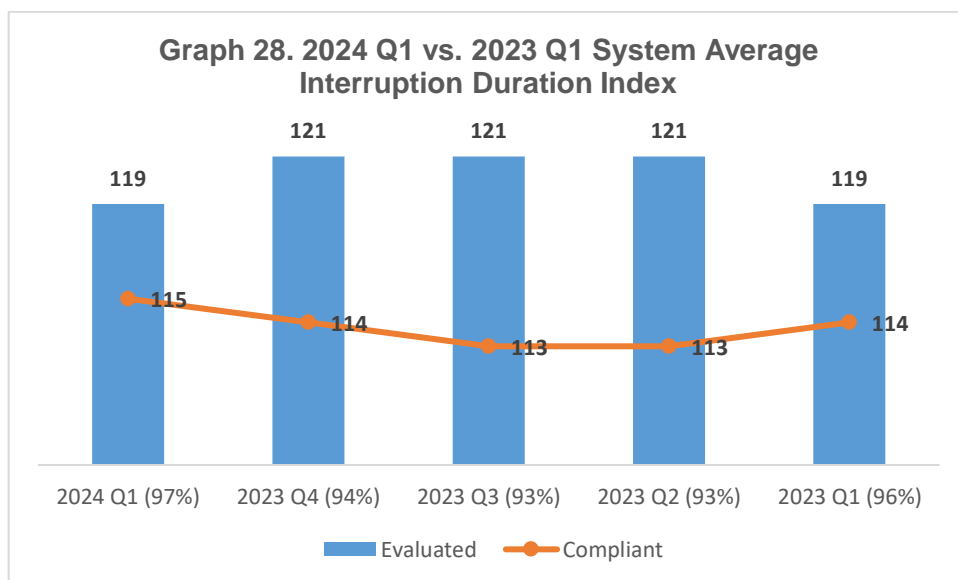
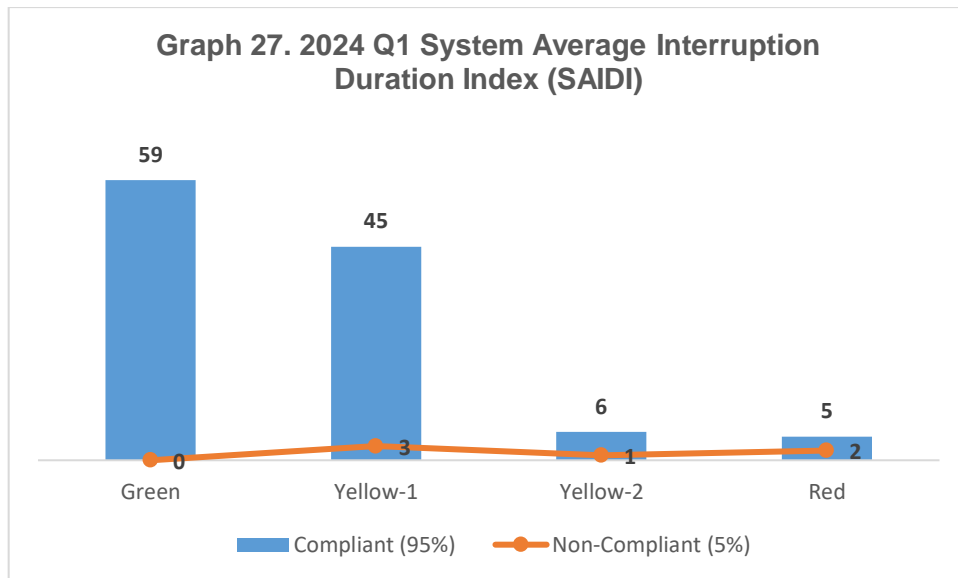
All 121 ECs were evaluated and 109 were assessed as compliant to the standard and the highest compliance level is registered in the Green ECs (Graph 25).



The graph shows that there was an increase in the number of evaluated ECs from 117 in 1st quarter of 2023 as compared to 119 in the 1st quarter of 2024 while a number of compliant ECs decreased from 110 to 109 in the same period. (Graph 26).

System Average Interruption Duration Index (SAIDI)

The total duration of sustained customer power interruptions within a given period divided by the total number of customers served within the same period makes up SAIDI. The standard is 2,700 minutes per consumer per year for on-grid ECs while 3,375 minutes per consumer for off-grid ECs. For the 1st quarter of 2024, all 121 ECs were evaluated, and the result showed that 115 ECs were compliant to the set standard (Graph 27).



The number of evaluated ECs varies for the last five quarters. It can be noted that the number of evaluated ECs is the same for the 1st quarter of 2023 and 2024, while the level of compliance increased by 1%, there was an increase of 2 from 119 in 1st quarter of 2023 to 121 in 4th quarter of 2023 and return to 119 in 1st quarter of 2024, also a slight decreased in the number of compliant ECs (Graph 28).

C. Institutional Standards and Parameters

While the institutional norms and principles do not affect the classification of ECs, there are standards and parameters set by the NEA to assess EC performance in relation to management of operations and effective delivery of service to member-consumer-owners. The objective of establishing these institutional requirements is to empower MCOs by promoting active participation in the activities of the ECs.

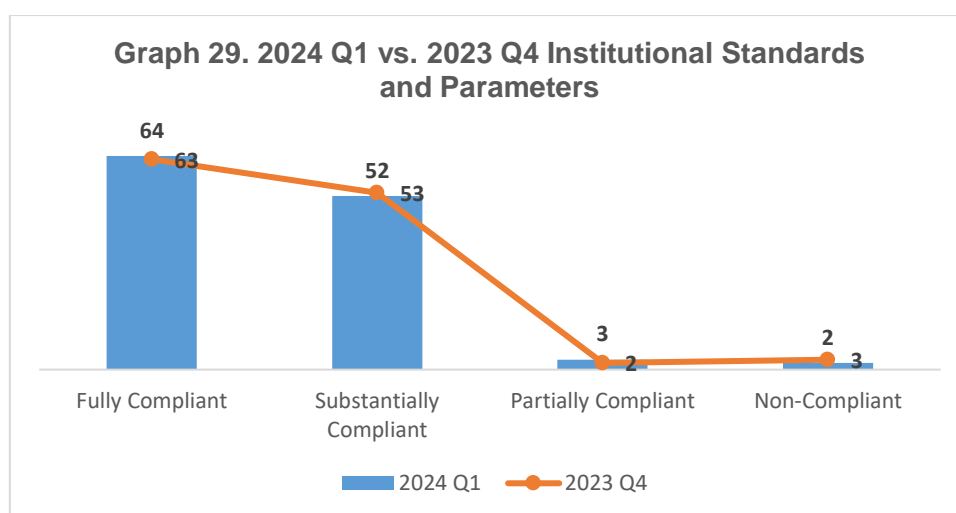
A fully compliant EC must have 100% performance score in the set institutional criteria. In range from 81% to 99%, ECs are considered substantially compliant, 61% to 80%, partially compliant while ECs with 60% and below are considered non-compliant.

The bases of the assessment are good governance, leadership/management, and stakeholders (Table 7). For overall institutional ratings, see Appendix C.

Table 7. Institutional Standards and Parameters Criteria

| Parameter | Weight |
|-------------------------------------|---------------|
| Good Governance. | 50% |
| Cash Advances/Power Account Payable | 10% |
| Board of Directors Attendance | 10% |
| Continuing Qualifications | 10% |
| Absence of Verified Complaint | 5% |
| Organizational Restructuring | 5% |
| IT Infrastructure | 5% |
| Audit Rating | 5% |
| Leadership and Management | 20% |
| Employee-Consumer Ratio | 10% |
| Availability of Retirement Fund | 10% |
| Stakeholders | 30% |
| Customer Service Standards | 14% |
| Conduct of AGMA | 6% |
| District Election | 6% |
| Action on Consumer Complaint | 4% |
| Total | 100% |

For this quarter, 64 ECs were fully compliant, 52 were substantially compliant, 3 were partially compliant, and 3 were non-compliant. In comparison with the previous quarter's data, we can observe that the number of fully compliant ECs increased by 1 EC. (Graph 29).



IV. Status of Rural Electrification Program

When the Rural Electrification Program started in 1969, the level of electrification was at 19% and was only concentrated in cities and major economic centers. With the partnership of the government through the National Electrification Administration and its implementing arms, the electric cooperatives, the electrification level continued to rise. To account for the level of accomplishments, the Philippine Statistics Authority's 2020 Census of Population was used as a basis for potential consumers.

For the 1st quarter of 2024, 81 out of 121 ECs are with 91% and above energization level. Out of the 89 ECs, 10 are at 100% level of energization. The ECs with 100% energization level are Green and Yellow-1 ECs with 8 and 2 respectively. On the other hand, 10 ECs have a level of energization below 70%, most of which come from Red ECs (Table 8). For a more comprehensive data, refer to Appendix C.

Table 8. 2024 Q1 Energization Level

| Energization Level | EC Classification | | | | Total | % |
|--------------------|-------------------|----------|----------|-----|-------|-----|
| | Green | Yellow-1 | Yellow-2 | Red | | |
| 100 | 8 | 2 | 0 | 0 | 10 | 8 |
| 97-99 | 24 | 16 | 0 | 0 | 40 | 33 |
| 94-96 | 10 | 6 | 0 | 1 | 17 | 14 |
| 91-93 | 6 | 7 | 0 | 1 | 14 | 12 |
| 88-90 | 5 | 3 | 1 | 0 | 9 | 7 |
| 85-87 | 1 | 5 | 0 | 0 | 6 | 5 |
| 82-84 | 2 | 2 | 2 | 0 | 6 | 5 |
| 79-81 | 1 | 1 | 1 | 0 | 3 | 2 |
| 76-78 | 1 | 1 | 0 | 0 | 2 | 2 |
| 73-75 | 1 | 2 | 0 | 0 | 3 | 2 |
| 70-72 | 0 | 1 | 0 | 0 | 1 | 1 |
| Below 70 | 0 | 2 | 3 | 5 | 10 | 8 |
| Total | 59 | 48 | 7 | 7 | 121 | 100 |

V. Appendices

Appendix A: Electric Cooperatives Performance Assessment

| Green Electric Cooperatives Performance Assessment Sheet | | | | | | | | | | | | | | |
|--|-----------------------|--|-----------------------------------|------------------|---------|------------------------|---------|--|-----------------|-----------------|-----------------|-----------------|--------------------|--------|
| (1st Quarter 2024) | | | | | | | | | | | | | | |
| Electric Cooperatives | Cash General Fund | | Average Collection Efficiency (%) | Accounts Payable | | | | Result of Financial Operation (Before RFSC)* | Net Worth | | | System Loss (%) | System Reliability | |
| | Working Capital Fund* | One Month Working Capital Requirement* | | Power | | Financial Institutions | | | 2024 Net Worth* | 2023 Net Worth* | 2022 Net Worth* | | SAIFI | SAIDI |
| | | | | GENCO | NGCP | NEA | BANKS | | | | | | | |
| Region I - Ilocos Region | | | | | | | | | | | | | | |
| ISECO | 669,459 | 228,022 | 98.07 | Current | Current | Current | N/A | 27,534 | 1,530,306 | 1,503,876 | 1,378,186 | 8.53% | 0.42 | 12.63 |
| LUELCO | 358,837 | 205,965 | 97.14 | Current | Current | Current | Current | 16,807 | 1,372,165 | 1,375,774 | 1,280,170 | 9.54% | 0.26 | 19.83 |
| PANELCO III | 860,464 | 344,542 | 96.79 | Current | Current | N/A | Current | 92,759 | 2,532,532 | 2,699,689 | 2,412,370 | 10.85% | 0.28 | 11.99 |
| Region II - Cagayan Valley | | | | | | | | | | | | | | |
| BATANELCO | 11,785 | 8,747 | 98.69 | Current | N/A | Current | Current | 142 | 286,878 | 290,240 | 333,407 | 2.36% | 0.55 | 23.54 |
| CAGELCO I | 571,978 | 249,346 | 100.00 | Current | Current | Current | Current | 24,637 | 1,623,526 | 0 | 1,260,256 | 11.22% | 0.95 | 84.03 |
| CAGELCO II | 566,377 | 140,006 | 100.00 | Current | Current | Current | Current | 14,427 | 1,695,630 | 1,663,723 | 1,485,580 | 9.30% | 1.18 | 99.27 |
| CAR - Cordillera Administrative Region | | | | | | | | | | | | | | |
| BENECO | 899,543 | 357,854 | 98.51 | Current | Current | Current | Current | 34,848 | 2,768,898 | 2,713,060 | 2,622,900 | 6.97% | 1.68 | 187.77 |
| IFELCO | 57,664 | 25,813 | 96.04 | Current | Current | Current | Current | 11,396 | 579,753 | 582,932 | 581,084 | 11.08% | 2.01 | 83.57 |
| MOPRECO | 74,263 | 21,621 | 100.00 | Current | Current | N/A | Current | 738 | 549,725 | 549,776 | 493,969 | 9.29% | 1.50 | 153.22 |
| Region III - Central Luzon | | | | | | | | | | | | | | |
| NEECO II - AREA 1 | 782,749 | 193,363 | 99.50 | Current | Current | Current | N/A | 87,766 | 1,587,322 | 1,497,601 | 1,271,753 | 5.06% | 0.89 | 72.95 |
| NEECO II - AREA 2 | 486,436 | 246,611 | 96.63 | Current | Current | Current | N/A | 69,281 | 1,809,713 | 1,792,770 | 1,576,542 | 7.34% | 0.88 | 27.79 |
| PRESCO | 92,425 | 75,192 | 99.08 | Res.Current | Current | N/A | Current | 14,843 | 321,962 | 308,914 | 263,423 | 11.60% | 0.47 | 67.13 |
| PELCO I | 1,761,237 | 257,430 | 100.00 | Current | Current | N/A | N/A | 48,936 | 3,308,541 | 3,295,022 | 2,896,092 | 4.52% | 1.18 | 89.42 |
| PENELCO | 1,459,116 | 494,533 | 97.48 | Current | Current | Current | Current | 87,431 | 3,758,362 | 3,658,499 | 2,828,466 | 5.47% | 1.18 | 125.02 |
| ZAMECO I | 426,217 | 165,898 | 95.83 | Res.Current | Current | Current | Current | 48,195 | 1,051,145 | 1,001,790 | 885,058 | 8.05% | 1.96 | 40.82 |
| ZAMECO II | 269,287 | 177,587 | 96.71 | Res.Current | Current | N/A | Current | 98,608 | 1,331,489 | 1,243,889 | 1,109,683 | 11.81% | 2.66 | 68.26 |
| Region IV-A - CALABARZON | | | | | | | | | | | | | | |
| FLECO | 164,964 | 100,017 | 98.82 | Current | Current | Current | Current | 2,967 | 771,660 | 750,453 | 683,982 | 8.84% | 0.27 | 10.23 |
| BATELEC II | 1,822,851 | 673,571 | 98.71 | Current | Current | Current | N/A | 66,351 | 5,896,928 | 5,801,514 | 5,326,145 | 9.11% | 1.56 | 76.08 |
| QUEZELCO I | 366,886 | 169,831 | 97.25 | Res.Current | Current | Current | Current | 202 | 1,601,792 | 1,613,539 | 1,574,782 | 8.10% | 1.68 | 92.56 |
| QUEZELCO II | 149,263 | 44,074 | 99.29 | Current | Current | Current | Current | 2,239 | 593,372 | 594,277 | 513,917 | 7.01% | 0.40 | 23.58 |
| Region IV-B - MIMAROPA | | | | | | | | | | | | | | |
| LUBELCO | 7,330 | 5,654 | 100.00 | Current | N/A | Current | Current | 702 | 94,065 | 95,381 | 90,156 | 5.91% | 3.20 | 124.24 |
| ORMECO | 403,777 | 277,746 | 98.31 | Res.Current | N/A | Current | Current | 27,996 | 2,527,452 | 2,526,204 | 2,282,058 | 10.39% | 2.58 | 142.03 |
| BISELCO | 78,147 | 47,837 | 100.00 | Res.Current | N/A | Current | Current | 4,808 | 481,590 | 475,508 | 433,117 | 5.71% | 5.82 | 557.21 |
| Region V - Bicol Region | | | | | | | | | | | | | | |
| CANORECO | 279,355 | 164,610 | 97.40 | Current | Current | Current | Current | 12,633 | 1,060,057 | 1,086,300 | 946,387 | 6.06% | 0.57 | 20.77 |
| CASURECO IV | 252,751 | 59,097 | 98.49 | Current | Current | Current | Current | 3,887 | 1,113,173 | 1,068,305 | 983,020 | 9.47% | 3.88 | 234.19 |
| SORECO I | 84,028 | 58,502 | 96.86 | Current | Current | Current | Current | 11,241 | 527,307 | 517,466 | 461,132 | 11.88% | 1.57 | 130.31 |
| FICELCO | 95,241 | 57,360 | 100.00 | Current | N/A | Current | Current | 1,079 | 474,562 | 335,085 | 254,996 | 8.77% | 2.97 | 424.06 |

Appendix A: Electric Cooperatives Performance Assessment Sheet

| Green Electric Cooperatives Performance Assessment Sheet | | | | | | | | | | | | | | |
|--|-----------------------|--|-----------------------------------|------------------|-------------|------------------------|---------|--|-----------------|-----------------|-----------------|-----------------|--------------------|--------|
| (1st Quarter 2024) | | | | | | | | | | | | | | |
| Electric Cooperatives | Cash General Fund | | Average Collection Efficiency (%) | Accounts Payable | | | | Result of Financial Operation (Before RFSC)* | Net Worth | | | System Loss (%) | System Reliability | |
| | Working Capital Fund* | One Month Working Capital Requirement* | | Power | | Financial Institutions | | | 2024 Net Worth* | 2023 Net Worth* | 2022 Net Worth* | | SAIFI | SAIDI |
| | | | | GENCO | NGCP | NEA | BANKS | | | | | | | |
| Region VI - Western Visayas | | | | | | | | | | | | | | |
| ANTECO | 423,234 | 146,341 | 95.51 | Current | Current | Current | Current | 35,697 | 1,904,985 | 1,917,465 | 1,739,565 | 8.77% | 2.55 | 129.61 |
| ILECO I | 1,908,412 | 338,954 | 96.85 | Current | Current | Current | Current | 48,586 | 2,566,182 | 2,518,565 | 2,262,460 | 6.49% | 3.22 | 69.41 |
| ILECO II | 506,261 | 224,179 | 97.04 | Current | Current | Current | Current | 6,327 | 1,738,876 | 1,732,261 | 1,533,605 | 10.24% | 3.00 | 176.09 |
| Region VII - Central Visayas | | | | | | | | | | | | | | |
| NORECO I | 131,609 | 95,725 | 97.29 | Current | Current | Current | Current | 8,680 | 839,181 | 817,853 | 680,067 | 9.66% | 3.04 | 264.92 |
| BANELCO | 64,041 | 43,942 | 100.00 | Current | N/A | Current | N/A | 4,068 | 476,760 | 474,529 | 473,339 | 8.24% | 1.02 | 61.10 |
| CEBECO I | 643,410 | 178,739 | 99.80 | Current | Current | Current | Current | 35,802 | 1,773,592 | 1,744,925 | 1,546,370 | 9.40% | 1.27 | 71.43 |
| CEBECO II | 1,108,780 | 254,059 | 99.91 | Current | Current | N/A | Current | 58,039 | 2,529,657 | 2,473,555 | 2,273,160 | 8.64% | 0.85 | 59.69 |
| CEBECO III | 459,621 | 134,264 | 100.00 | Current | Current | N/A | Current | 15,123 | 927,522 | 889,371 | 773,386 | 6.38% | 0.83 | 23.97 |
| PROSIELCO | 58,719 | 33,497 | 100.00 | Current | N/A | Current | N/A | 1,024 | 202,262 | 201,285 | 187,157 | 8.82% | 1.13 | 53.16 |
| CELCO | 24,523 | 22,024 | 99.74 | Current | N/A | Current | Current | 2,096 | 208,661 | 206,564 | 200,894 | 6.66% | 3.14 | 43.36 |
| BOHECO I | 495,659 | 187,299 | 99.37 | Current | Current | Current | Current | 5,258 | 1,628,650 | 1,624,144 | 1,461,822 | 5.61% | 1.29 | 133.91 |
| Region VIII - Eastern Visayas | | | | | | | | | | | | | | |
| DORELCO | 95,186 | 85,384 | 97.07 | Current | Current | Current | Current | 11,681 | 651,078 | 651,453 | 669,449 | 11.26% | 3.01 | 142.03 |
| LEYECO II | 461,002 | 208,885 | 97.14 | Current | Res.Current | N/A | Current | 19,086 | 1,052,919 | 1,091,636 | 911,748 | 8.18% | 1.64 | 72.00 |
| LEYECO III | 96,059 | 59,590 | 96.73 | Current | Current | Current | Current | 12,742 | 486,494 | 474,949 | 455,021 | 8.82% | 1.63 | 63.42 |
| LEYECO IV | 400,805 | 78,101 | 97.11 | Current | Current | Current | N/A | 8,424 | 1,458,566 | 1,451,747 | 729,707 | 8.86% | 4.72 | 213.32 |
| LEYECO V | 472,186 | 208,180 | 100.00 | Current | Res.Current | Current | Current | 72,395 | 2,035,521 | 1,973,107 | 1,714,666 | 8.23% | 3.55 | 164.10 |
| SOLECO | 490,789 | 91,028 | 98.97 | Current | Current | Current | Current | 35,693 | 1,749,312 | 1,745,052 | 1,560,007 | 9.87% | 4.33 | 413.56 |
| SAMELCO I | 185,376 | 72,290 | 100.00 | Current | Current | Current | Current | 23,465 | 584,941 | 540,482 | 441,662 | 6.56% | 3.42 | 159.19 |
| Region IX - Zamboanga Peninsula | | | | | | | | | | | | | | |
| ZAMSURECO I | 547,390 | 256,492 | 98.96 | Current | Current | Current | Current | 51,308 | 2,119,449 | 2,072,774 | 1,943,254 | 6.75% | 2.18 | 101.31 |
| Region X - Northern Mindanao | | | | | | | | | | | | | | |
| MORESCO I | 414,345 | 263,158 | 100.00 | Current | Current | Current | Current | 17,706 | 1,880,211 | 1,845,374 | 1,621,119 | 4.18% | 1.72 | 70.35 |
| MORESCO II | 299,487 | 143,707 | 98.50 | Res.Current | Current | Current | Current | 9,523 | 629,537 | 599,935 | 528,236 | 9.34% | 2.97 | 331.28 |
| BUSECO | 330,443 | 152,970 | 98.83 | Current | Current | Current | Current | 3,133 | 1,662,202 | 1,671,394 | 1,539,372 | 9.68% | 2.78 | 247.39 |
| Region XI - Davao Region | | | | | | | | | | | | | | |
| DASURECO | 863,952 | 378,331 | 97.09 | Current | Current | Current | Current | 37,997 | 2,487,537 | 2,558,117 | 2,341,970 | 9.86% | 1.54 | 52.33 |
| Region XII - SOCCSKSARGEN | | | | | | | | | | | | | | |
| COTELCO | 216,374 | 215,874 | 97.39 | Current | Current | Current | Current | 10,933 | 1,699,454 | 1,647,059 | 1,691,930 | 9.97% | 2.63 | 41.80 |
| SOCOTECO I | 541,119 | 247,235 | 98.16 | Current | Current | Current | Current | 46,792 | 1,640,696 | 1,578,205 | 1,476,020 | 11.43% | 5.16 | 131.29 |
| Region XIII - CARAGA | | | | | | | | | | | | | | |
| ANECO | 681,419 | 350,713 | 97.59 | Current | Current | Current | Current | 35,954 | 1,511,422 | 1,480,096 | 1,336,957 | 10.66% | 1.87 | 84.65 |
| ASELCO | 252,993 | 176,696 | 95.27 | Current | Current | Current | Current | 25,402 | 1,876,954 | 1,389,715 | 1,528,703 | 7.78% | 3.84 | 216.50 |
| SURNECO | 146,895 | 140,677 | 96.30 | Res.Current | Current | Current | Current | 19,219 | 574,440 | 469,714 | 321,759 | 9.61% | 3.34 | 191.98 |
| SIARELCO | 174,318 | 38,293 | 100.00 | Current | Current | Current | Current | 22,243 | 513,582 | 536,740 | 428,202 | 7.68% | 0.91 | 144.13 |
| DIELCO | 85,862 | 18,837 | 100.00 | Current | N/A | Current | N/A | 5,401 | 368,526 | 360,784 | 297,653 | 1.57% | 4.11 | 59.11 |
| SURSECO I | 101,765 | 63,142 | 98.53 | Current | Current | Current | Current | 7,463 | 774,721 | 753,340 | 670,281 | 9.79% | 2.21 | 245.61 |
| SURSECO II | 102,664 | 96,269 | 98.83 | Res.Current | Current | N/A | Current | 14,891 | 496,946 | 478,551 | inc | 11.15% | 3.89 | 152.09 |

Note: * - In Thousand Pesos

Appendix A: Electric Cooperatives Performance Assessment Sheet

| Yellow-1 Electric Cooperatives Performance Assessment Sheet | | | | | | | | | | | | | | |
|---|-----------------------|--|-----------------------------------|------------------|---------|------------------------|---------|--|-----------------|-----------------|-----------------|-----------------|--------------------|--------|
| (1st Quarter 2024) | | | | | | | | | | | | | | |
| Electric Cooperatives | Cash General Fund | | Average Collection Efficiency (%) | Accounts Payable | | | | Result of Financial Operation (Before RFSC)* | Net Worth | | | System Loss (%) | System Reliability | |
| | Working Capital Fund* | One Month Working Capital Requirement* | | Power | | Financial Institutions | | | 2024 Net Worth* | 2023 Net Worth* | 2022 Net Worth* | | SAIFI | SAIDI |
| | | | | GENCO | NGCP | NEA | BANKS | | | | | | | |
| Region I - Ilocos Region | | | | | | | | | | | | | | |
| INEC | 435,897 | 237,526 | 100.00 | Current | Current | Current | Current | -25,171 | 1,063,503 | 1,084,895 | 677,013 | 6.85% | 1.23 | 118.78 |
| PANELCO I | 151,295 | 124,199 | 100.00 | Current | Current | N/A | Current | -70,795 | 628,009 | 752,831 | 744,032 | 11.78% | 2.44 | 208.75 |
| CENPELCO | 209,680 | 432,795 | 94.19 | Res.Current | Current | Current | Current | 10,938 | 1,536,024 | 1,449,588 | 1,047,098 | 10.99% | 2.65 | 160.89 |
| Region II - Cagayan Valley | | | | | | | | | | | | | | |
| ISELCO I | 376,596 | 360,392 | 96.00 | Res.Current | Current | Current | Current | -3,870 | 1,794,017 | 1,310,268 | 1,303,771 | 11.02% | 1.66 | 97.84 |
| ISELCO II | dns | dns | dns | Current | Current | Current | Current | dns | dns | 1,341,617 | 1,260,858 | dns | dns | dns |
| NUVELCO | 354,636 | 140,288 | 92.56 | Current | Current | N/A | Current | 29,110 | 1,700,358 | 1,649,576 | 1,596,890 | 10.35% | 1.67 | 33.59 |
| QUIRELCO | 194,492 | 40,071 | 100.00 | Current | Current | N/A | Current | -3,903 | 635,394 | 648,206 | 573,062 | 13.89% | 0.76 | 90.43 |
| CAR - Cordillera Administrative Region | | | | | | | | | | | | | | |
| KAELCO | 159,488 | 50,936 | 83.28 | Current | Current | Current | Current | 14,279 | 704,455 | 671,991 | 622,071 | 14.69% | 2.81 | 134.47 |
| Region III - Central Luzon | | | | | | | | | | | | | | |
| AURELCO | 208,854 | 68,703 | 95.11 | Current | Current | Current | Current | -3,319 | 881,113 | 886,682 | 755,264 | 8.89% | 1.11 | 136.15 |
| TARELCO I | 1,143,540 | 278,622 | 89.96 | Current | Current | Current | N/A | 70,013 | 1,965,770 | 1,925,260 | 1,932,382 | 8.36% | 3.08 | 112.53 |
| TARELCO II | 666,917 | 260,288 | 94.86 | Current | Current | N/A | N/A | 46,274 | 2,376,257 | 2,325,408 | 2,088,564 | 7.33% | 1.74 | 130.88 |
| NEECO I | 654,006 | 185,374 | 100.00 | Current | Current | N/A | N/A | 16,913 | 1,435,996 | 1,393,861 | 1,242,053 | 14.35% | 2.89 | 42.50 |
| SAJELCO | 164,951 | 82,668 | 97.62 | Current | Current | N/A | Current | -9,988 | 661,488 | 671,287 | 561,496 | 6.99% | 0.00 | 0.00 |
| PELCO II | 727,817 | 489,958 | 100.00 | Current | Current | N/A | Current | 33,247 | 2,071,548 | 2,025,539 | 155,722 | 12.70% | 1.73 | 92.96 |
| PELCO III | 166,711 | 215,852 | 97.17 | Res.Current | Current | Current | Current | 1,672 | -189,106 | -130,681 | -102,518 | 7.89% | 0.68 | 168.67 |
| Region IV-A - CALABARZON | | | | | | | | | | | | | | |
| BATELEC I | 590,418 | 355,269 | 96.40 | Current | Current | N/A | N/A | -25,758 | 1,729,248 | 1,706,914 | 1,462,520 | 10.37% | 1.08 | 49.93 |
| Region IV-B - MIMAROPA | | | | | | | | | | | | | | |
| OMECCO | 241,330 | 185,783 | 97.71 | Current | N/A | Current | Current | 11,597 | 616,785 | 616,316 | 694,350 | 13.28% | 4.82 | 61.95 |
| MARELCO | 20,536 | 54,058 | 100.00 | Current | N/A | Current | Current | -1,028 | 426,262 | 430,577 | 417,255 | 9.14% | 2.97 | 338.21 |
| TIELCO | 48,480 | 45,567 | 99.93 | Current | N/A | Current | Current | -453 | 265,857 | 22,278 | 224,573 | 9.09% | 1.89 | 173.75 |
| ROMELCO | 18,505 | 22,998 | 96.66 | Current | N/A | Current | Current | 1,413 | 467,073 | 468,705 | 458,713 | 12.97% | 1.35 | 10.40 |
| PALECO | 656,527 | 414,339 | 92.11 | Current | N/A | Current | Current | 30,116 | 1,513,210 | 1,527,310 | 1,253,740 | 13.37% | 2.82 | 217.74 |
| Region V - Bicol Region | | | | | | | | | | | | | | |
| CASURECO I | 92,484 | 70,787 | 100.00 | Current | Current | Current | Current | -3,989 | 1,072,495 | 1,070,527 | 992,822 | 8.00% | 3.91 | 174.68 |
| CASURECO II | 373,633 | 228,598 | 99.46 | Current | Current | N/A | N/A | -42,910 | 908,993 | 953,033 | 854,370 | 12.44% | 2.84 | 127.18 |
| CASURECO III | 88,299 | 99,614 | 93.31 | Arrears | Current | Current | Current | 13,453 | 23,197 | -30,653 | -89,926 | 10.12% | 2.02 | 18.03 |
| SORECO II | 185,462 | 111,639 | 98.07 | Res.Current | Current | Current | Current | -5,384 | 661,538 | 667,729 | 786,395 | 10.68% | 2.55 | 143.70 |
| TISELCO | dns | dns | dns | Res.Arrears | N/A | Current | N/A | dns | dns | dns | inc | dns | dns | dns |
| Region VI - Western Visayas | | | | | | | | | | | | | | |
| AKELCO | 299,252 | 358,860 | 98.55 | Current | Current | Current | Current | -19,605 | 1,100,356 | 1,100,356 | 959,304 | 8.36% | 4.59 | 207.07 |
| CAPELCO | 314,418 | 271,624 | 97.83 | Current | Current | Current | Current | -12,494 | 1,211,613 | 1,237,217 | 1,182,204 | 10.18% | 1.09 | 95.41 |
| ILECO III | 345,106 | 137,164 | 99.63 | Current | Current | Current | Current | -2,660 | 845,977 | 804,499 | 748,806 | 5.78% | 0.43 | 14.40 |
| GUIMELCO | 35,417 | 53,879 | 99.05 | Current | Current | Current | Current | 14,476 | 544,109 | 570,957 | 558,423 | 9.40% | 0.85 | 85.04 |
| NONECO | 116,384 | 248,861 | 95.15 | Current | Current | Current | Current | -43,429 | 579,158 | 627,725 | 687,666 | 12.09% | 0.56 | 51.78 |
| CENECO | 868,061 | 765,800 | 93.72 | Current | Current | Current | Current | -100,335 | 3,080,093 | 3,575,687 | 2,463,643 | 9.82% | 4.49 | 211.38 |
| NOCECO | 668,506 | 296,793 | 97.97 | Current | Current | N/A | Current | -18,674 | 1,508,259 | 1,562,696 | 1,416,379 | 11.95% | 2.57 | 165.43 |

Appendix A: Electric Cooperatives Performance Assessment Sheet

| Yellow-1 Electric Cooperatives Performance Assessment Sheet | | | | | | | | | | | | | | |
|---|-----------------------|--|-----------------------------------|------------------|---------|------------------------|---------|--|-----------------|-----------------|-----------------|-----------------|--------------------|----------|
| (1st Quarter 2024) | | | | | | | | | | | | | | |
| Electric Cooperatives | Cash General Fund | | Average Collection Efficiency (%) | Accounts Payable | | | | Result of Financial Operation (Before RFSC)* | Net Worth | | | System Loss (%) | System Reliability | |
| | Working Capital Fund* | One Month Working Capital Requirement* | | Power | | Financial Institutions | | | 2024 Net Worth* | 2023 Net Worth* | 2022 Net Worth* | | SAIFI | SAIDI |
| | | | | GENCO | NGCP | NEA | BANKS | | | | | | | |
| Region VII - Central Visayas | | | | | | | | | | | | | | |
| NORECO II | 566,044 | 365,491 | 97.52 | Current | Current | N/A | N/A | -14,131 | 1,812,455 | 1,822,231 | 1,696,189 | 10.07% | 2.80 | 82.98 |
| BOHECO II | 267,854 | 123,813 | 100.00 | Current | Current | Current | Current | -3,162 | 705,358 | 654,808 | 586,282 | 10.33% | 2.40 | 137.11 |
| Region VIII - Eastern Visayas | | | | | | | | | | | | | | |
| BILECO | 175,095 | 43,521 | 97.58 | Current | Current | Current | Current | 11,088 | 506,806 | 501,682 | 465,754 | 12.84% | 3.47 | 206.78 |
| NORSAMELCO | 65,060 | 111,110 | 97.16 | Current | Current | Current | Current | 24,634 | 698,116 | 719,446 | 553,842 | 10.54% | 2.22 | 83.14 |
| SAMELCO II | 191,472 | 84,067 | 100.00 | Current | Current | Current | Current | -1,934 | 1,125,617 | 1,133,767 | 1,061,241 | 8.40% | 1.72 | 353.36 |
| ESAMELCO | 218,667 | 101,455 | 100.00 | Current | Current | Current | Current | 7,177 | 1,379,482 | 1,491,662 | 1,408,127 | 14.42% | 5.55 | 600.13 |
| Region IX - Zamboanga Peninsula | | | | | | | | | | | | | | |
| ZANECO | 175,727 | 216,984 | 98.70 | Current | Current | Current | Current | -10,550 | 2,118,159 | 2,131,859 | 1,050,451 | 10.96% | 2.68 | 105.47 |
| Region X - Northern Mindanao | | | | | | | | | | | | | | |
| MOELCI I | 34,552 | 67,157 | 94.97 | Res.Current | Current | Current | Current | 8,519 | 345,382 | 337,423 | 296,970 | 13.23% | 5.10 | 222.63 |
| MOELCI II | 66,588 | 149,811 | 96.46 | Res.Current | Current | N/A | N/A | 3,314 | 534,450 | 501,574 | 438,221 | 10.93% | 3.37 | 247.66 |
| CAMELCO | 33,905 | 25,633 | 98.78 | Res.Arrears | Current | Current | Current | 4,671 | 424,533 | 420,462 | 423,048 | 14.17% | 4.04 | 62.29 |
| LANECO | 72,702 | 114,164 | 99.37 | Res.Current | Current | Current | Current | -1,959 | 492,290 | 491,317 | 517,204 | 11.00% | 2.40 | 54.50 |
| Region XI - Davao Region | | | | | | | | | | | | | | |
| NORDECO | 360,525 | 479,021 | 69.17 | Res.Arrears | Current | Current | Current | 6,808 | 644,269 | 1,308,048 | 1,411,228 | 11.69% | 2.66 | 122.20 |
| Region XII - SOCCSKSARGEN | | | | | | | | | | | | | | |
| SUKELCO | 157,888 | 187,612 | 92.98 | Res.Current | Current | Current | Current | 28,629 | 1,472,555 | 1,454,077 | 1,392,503 | 9.20% | 3.34 | 113.35 |
| ARMM - Autonomous Region in Muslim Mindanao | | | | | | | | | | | | | | |
| SIASELCO | 11,900 | 4,327 | 78.89 | Current | N/A | Current | dns | 1,476 | 115,172 | 114,021 | 107,757 | 11.53% | 4.41 | 2,252.96 |
| CASELCO | dns | dns | dns | Res.Arrears | N/A | N/A | dns | dns | dns | dns | inc | 6.84% | 10.40 | 684.47 |

Note: * - In Thousand Pesos

Appendix A: Electric Cooperatives Performance Assessment Sheet

| Yellow-2 Electric Cooperatives Performance Assessment Sheet | | | | | | | | | | | | | | |
|---|-----------------------|--|-----------------------------------|------------------|-------------|------------------------|---------|--|-----------------|-----------------|-----------------|-----------------|--------------------|----------|
| (1st Quarter 2024) | | | | | | | | | | | | | | |
| Electric Cooperatives | Cash General Fund | | Average Collection Efficiency (%) | Accounts Payable | | | | Result of Financial Operation (Before RFSC)* | Net Worth | | | System Loss (%) | System Reliability | |
| | Working Capital Fund* | One Month Working Capital Requirement* | | Power | | Financial Institutions | | | 2024 Net Worth* | 2023 Net Worth* | 2022 Net Worth* | | SAIFI | SAIDI |
| | | | | GENCO | NGCP | NEA | BANKS | | | | | | | |
| Region IX - Zamboanga Peninsula | | | | | | | | | | | | | | |
| ZAMSURECO II | 76,418 | 128,141 | 90.19 | Res.Arrears | Current | Current | Current | 16,686 | -182,086 | -205,779 | -223,690 | 18.70% | 9.14 | 298.70 |
| ZAMCELCO | 379,945 | 533,013 | 89.80 | Res.Arrears | Current | Current | N/A | -198,477 | 866,474 | 1,064,797 | 1,462,881 | 21.56% | 1.56 | 53.13 |
| Region X - Northern Mindanao | | | | | | | | | | | | | | |
| FIBECCO | 81,869 | 201,706 | 91.88 | Res.Arrears | Current | Current | Current | -47,845 | 1,075,985 | 1,158,280 | 915,598 | 12.69% | 2.62 | 244.76 |
| Region XI - Davao Region | | | | | | | | | | | | | | |
| DORECO | 32,444 | 149,212 | 94.96 | Current | Current | Current | Current | -5,373 | 569,987 | 594,443 | 587,298 | 11.67% | 6.67 | 307.28 |
| Region XII - SOCCSKSARGEN | | | | | | | | | | | | | | |
| COTELCO-PPALMA | 18,092 | 77,014 | 98.60 | Current | Current | Current | Current | -4,626 | 657,816 | 670,018 | 526,428 | 16.73% | 7.82 | 250.44 |
| SOCOTECO II | 375,879 | 741,614 | 95.45 | Current | Current | Current | Current | -58,462 | 2,130,763 | 2,129,260 | 1,973,119 | 13.44% | 8.66 | 667.94 |
| ARMM - Autonomous Region in Muslim Mindanao | | | | | | | | | | | | | | |
| MAGELCO | 98,101 | 62,114 | 12.06 | Res.Arrears | Res.Current | Arrears | N/A | -75,837 | -1,120,411 | dns | inc | 54.57% | 27.86 | 2,288.87 |

Note: * - In Thousand Pesos

| Red Electric Cooperatives Performance Assessment Sheet | | | | | | | | | | | | | | |
|--|-----------------------|--|-----------------------------------|------------------|---------|------------------------|---------|--|-----------------|-----------------|-----------------|-----------------|--------------------|----------|
| (1st Quarter 2024) | | | | | | | | | | | | | | |
| Electric Cooperatives | Cash General Fund | | Average Collection Efficiency (%) | Accounts Payable | | | | Result of Financial Operation (Before RFSC)* | Net Worth | | | System Loss (%) | System Reliability | |
| | Working Capital Fund* | One Month Working Capital Requirement* | | Power | | Financial Institutions | | | 2024 Net Worth* | 2023 Net Worth* | 2022 Net Worth* | | SAIFI | SAIDI |
| | | | | GENCO | NGCP | NEA | BANKS | | | | | | | |
| CAR - Cordillera Administrative Region | | | | | | | | | | | | | | |
| ABRECO | 27,618 | 70,570 | 92.60 | Res.Arrears | Current | Current | Arrears | -20,358 | -264,193 | -186,094 | -79,668 | 16.43% | 1.21 | 28.84 |
| Region V - Bicol Region | | | | | | | | | | | | | | |
| ALECO | 185,569 | 333,871 | 88.11 | Arrears | Arrears | Current | N/A | -131,879 | -1,312,087 | -1,210,950 | inc | 23.75% | 11.69 | 555.99 |
| MASELCO | 148,131 | 96,228 | 97.47 | Res.Arrears | N/A | Current | Current | -7,610 | -29,208 | 8,477 | 342,639 | 12.47% | 4.33 | 407.17 |
| ARMM - Autonomous Region in Muslim Mindanao | | | | | | | | | | | | | | |
| TAWELCO | 53,417 | 31,529 | 37.01 | Arrears | N/A | Current | N/A | -20,180 | -1,299,423 | -1,273,602 | -1,263,577 | 19.90% | 11.01 | 221.24 |
| SULECO | 244,882 | 45,270 | 44.13 | Current | N/A | Current | N/A | 9,570 | -608,595 | -648,921 | -694,299 | 8.58% | 5.53 | 80.41 |
| BASELCO | 78,608 | 51,890 | 63.13 | Arrears | N/A | Current | N/A | -19,169 | -2,835,567 | -2,826,399 | -1,271,745 | 25.23% | 71.93 | 2,426.62 |
| LASURECO | NDA | NDA | NDA | Arrears | Arrears | Arrears | N/A | NDA | NDA | dns | inc | 28.34% | 12.56 | 1,318.78 |

Note: * - In Thousand Pesos

Appendix B: Technical Parameter Indices

| Electric cooperatives | SAIFI | STATUS | SAIDI | STATUS | System Loss (%) | STATUS |
|-----------------------|-------|--------|--------|--------|-----------------|--------|
| Region I | | | | | | |
| INEC | 1.23 | C | 118.78 | C | 6.85 | C |
| ISECO | 0.42 | C | 12.63 | C | 8.53 | C |
| LUELCO | 0.26 | C | 19.83 | C | 9.54 | C |
| PANELCO I | 2.44 | C | 208.75 | C | 11.78 | C |
| CENPELCO | 2.65 | C | 160.89 | C | 10.99 | C |
| PANELCO III | 0.28 | C | 11.99 | C | 10.85 | C |
| Region II | | | | | | |
| BATANELCO | 0.55 | C | 23.54 | C | 2.36 | C |
| CAGELCO I | 0.95 | C | 84.03 | C | 11.22 | C |
| CAGELCO II | 1.18 | C | 99.27 | C | 9.30 | C |
| ISELCO I | 1.66 | C | 97.84 | C | 11.02 | C |
| ISELCO II | dns | NC | dns | NC | dns | NC |
| NUVELCO | 1.67 | C | 33.59 | C | 10.35 | C |
| QUIRELCO | 0.76 | C | 90.43 | C | 13.89 | NC |
| CAR | | | | | | |
| ABRECO | 1.21 | C | 28.84 | C | 16.43 | NC |
| BENECO | 1.68 | C | 187.77 | C | 6.97 | C |
| IFELCO | 2.01 | C | 83.57 | C | 11.08 | C |
| KAELCO | 2.81 | C | 134.47 | C | 14.69 | NC |
| MOPRECO | 1.50 | C | 153.22 | C | 9.29 | C |
| Region III | | | | | | |
| AURELCO | 1.11 | C | 136.15 | C | 8.89 | C |
| TARELCO I | 3.08 | C | 112.53 | C | 8.36 | C |
| TARELCO II | 1.74 | C | 130.88 | C | 7.33 | C |
| NEECO I | 2.89 | C | 42.50 | C | 14.35 | NC |
| NEECO II - AREA 1 | 0.89 | C | 72.95 | C | 5.06 | C |
| NEECO II - AREA 2 | 0.88 | C | 27.79 | C | 7.34 | C |
| SAJELCO | 0.00 | C | 0.00 | C | 6.99 | C |
| PRESCO | 0.47 | C | 67.13 | C | 11.60 | C |
| PELCO I | 1.18 | C | 89.42 | C | 4.52 | C |
| PELCO II | 1.73 | C | 92.96 | C | 12.70 | NC |
| PELCO III | 0.68 | C | 168.67 | C | 7.89 | C |
| PENELCO | 1.18 | C | 125.02 | C | 5.47 | C |
| ZAMECO I | 1.96 | C | 40.82 | C | 8.05 | C |
| ZAMECO II | 2.66 | C | 68.26 | C | 11.81 | C |

Note: C – Compliant, NC – Non-Compliant, dns – Did not Submit, inc - Incomplete

Appendix B: Technical Parameter Indices

| Electric cooperatives | SAIFI | STATUS | SAIDI | STATUS | System Loss (%) | STATUS |
|-----------------------|-------|--------|--------|--------|-----------------|--------|
| Region IV-A | | | | | | |
| FLECO | 0.27 | C | 10.23 | C | 8.84 | C |
| BATELEC I | 1.08 | C | 49.93 | C | 10.37 | C |
| BATELEC II | 1.56 | C | 76.08 | C | 9.11 | C |
| QUEZELCO I | 1.68 | C | 92.56 | C | 8.10 | C |
| QUEZELCO II | 0.40 | C | 23.58 | C | 7.01 | C |
| Region IV-B | | | | | | |
| LUBELCO | 3.20 | C | 124.24 | C | 5.91 | C |
| OMECO | 4.82 | C | 61.95 | C | 13.28 | NC |
| ORMECO | 2.58 | C | 142.03 | C | 10.39 | C |
| MARELCO | 2.97 | C | 338.21 | C | 9.14 | C |
| TIELCO | 1.89 | C | 173.75 | C | 9.09 | C |
| ROMELCO | 1.35 | C | 10.40 | C | 12.97 | NC |
| BISELCO | 5.82 | C | 557.21 | C | 5.71 | C |
| PALECO | 2.82 | C | 217.74 | C | 13.37 | NC |
| Region V | | | | | | |
| CANORECO | 0.57 | C | 20.77 | C | 6.06 | C |
| CASURECO I | 3.91 | C | 174.68 | C | 8.00 | C |
| CASURECO II | 2.84 | C | 127.18 | C | 12.44 | NC |
| CASURECO III | 2.02 | C | 18.03 | C | 10.12 | C |
| CASURECO IV | 3.88 | C | 234.19 | C | 9.47 | C |
| ALECO | 11.69 | NC | 555.99 | C | 23.75 | NC |
| SORECO I | 1.57 | C | 130.31 | C | 11.88 | C |
| SORECO II | 2.55 | C | 143.70 | C | 10.68 | C |
| FICELCO | 2.97 | C | 424.06 | C | 8.77 | C |
| MASELCO | 4.33 | C | 407.17 | C | 12.47 | NC |
| TISELCO | dns | NC | dns | NC | dns | NC |
| Region VI | | | | | | |
| AKELCO | 4.59 | C | 207.07 | C | 8.36 | C |
| ANTECO | 2.55 | C | 129.61 | C | 8.77 | C |
| CAPELCO | 1.09 | C | 95.41 | C | 10.18 | C |
| ILECO I | 3.22 | C | 69.41 | C | 6.49 | C |
| ILECO II | 3.00 | C | 176.09 | C | 10.24 | C |
| ILECO III | 0.43 | C | 14.40 | C | 5.78 | C |
| GUIMELCO | 0.85 | C | 85.04 | C | 9.40 | C |
| NONECO | 0.56 | C | 51.78 | C | 12.09 | NC |
| CENECO | 4.49 | C | 211.38 | C | 9.82 | C |
| NOCECO | 2.57 | C | 165.43 | C | 11.95 | C |

Note: C – Compliant, NC – Non-Compliant, dns – Did not Submit, inc - Incomplete

Appendix B: Technical Parameter Indices

| Electric cooperatives | SAIFI | STATUS | SAIDI | STATUS | System Loss (%) | STATUS |
|-----------------------|-------|--------|--------|--------|-----------------|--------|
| Region VII | | | | | | |
| NORECO I | 3.04 | C | 264.92 | C | 9.66 | C |
| NORECO II | 2.80 | C | 82.98 | C | 10.07 | C |
| BANELCO | 1.02 | C | 61.10 | C | 8.24 | C |
| CEBECO I | 1.27 | C | 71.43 | C | 9.40 | C |
| CEBECO II | 0.85 | C | 59.69 | C | 8.64 | C |
| CEBECO III | 0.83 | C | 23.97 | C | 6.38 | C |
| PROSIELCO | 1.13 | C | 53.16 | C | 8.82 | C |
| CELCO | 3.14 | C | 43.36 | C | 6.66 | C |
| BOHECO I | 1.29 | C | 133.91 | C | 5.61 | C |
| BOHECO II | 2.40 | C | 137.11 | C | 10.33 | C |
| Region VIII | | | | | | |
| DORELCO | 3.01 | C | 142.03 | C | 11.26 | C |
| LEYECO II | 1.64 | C | 72.00 | C | 8.18 | C |
| LEYECO III | 1.63 | C | 63.42 | C | 8.82 | C |
| LEYECO IV | 4.72 | C | 213.32 | C | 8.86 | C |
| LEYECO V | 3.55 | C | 164.10 | C | 8.23 | C |
| SOLECO | 4.33 | C | 413.56 | C | 9.87 | C |
| BILECO | 3.47 | C | 206.78 | C | 12.84 | NC |
| NORSAMELCO | 2.22 | C | 83.14 | C | 10.54 | C |
| SAMELCO I | 3.42 | C | 159.19 | C | 6.56 | C |
| SAMELCO II | 1.72 | C | 353.36 | C | 8.40 | C |
| ESAMELCO | 5.55 | C | 600.13 | C | 14.42 | NC |
| Region IX | | | | | | |
| ZANECO | 2.68 | C | 105.47 | C | 10.96 | C |
| ZAMSURECO I | 2.18 | C | 101.31 | C | 6.75 | C |
| ZAMSURECO II | 9.14 | NC | 298.70 | C | 18.70 | NC |
| ZAMCELCO | 1.56 | C | 53.13 | C | 21.56 | NC |

Note: C – Compliant, NC – Non-Compliant, dns – Did not Submit, inc - Incomplete

Appendix B: Technical Parameter Indices

| Electric cooperatives | SAIFI | STATUS | SAIDI | STATUS | System Loss (%) | STATUS |
|-----------------------|-------|--------|----------|--------|-----------------|--------|
| Region X | | | | | | |
| MOELCI I | 5.10 | C | 222.63 | C | 13.23 | NC |
| MOELCI II | 3.37 | C | 247.66 | C | 10.93 | C |
| MORESCO I | 1.72 | C | 70.35 | C | 4.18 | C |
| MORESCO II | 2.97 | C | 331.28 | C | 9.34 | C |
| FIBECO | 2.62 | C | 244.76 | C | 12.69 | NC |
| BUSECO | 2.78 | C | 247.39 | C | 9.68 | C |
| CAMELCO | 4.04 | C | 62.29 | C | 14.17 | NC |
| LANECO | 2.40 | C | 54.50 | C | 11.00 | C |
| Region XI | | | | | | |
| DORECO | 6.67 | NC | 307.28 | C | 11.67 | C |
| NORDECO | 2.66 | C | 122.20 | C | 11.69 | C |
| DASURECO | 1.54 | C | 52.33 | C | 9.86 | C |
| Region XII | | | | | | |
| COTELCO | 2.63 | C | 41.80 | C | 9.97 | C |
| COTELCO-PPALMA | 7.82 | NC | 250.44 | C | 16.73 | NC |
| SOCOTECO I | 5.16 | C | 131.29 | C | 11.43 | C |
| SOCOTECO II | 8.66 | NC | 667.94 | C | 13.44 | NC |
| SUKELCO | 3.34 | C | 113.35 | C | 9.20 | C |
| BARMM | | | | | | |
| TAWELCO | 11.01 | NC | 221.24 | C | 19.90 | NC |
| SIASELCO | 4.41 | C | 2,252.96 | NC | 11.53 | C |
| SULECO | 5.53 | C | 80.41 | C | 8.58 | C |
| BASELCO | 71.93 | NC | 2,426.62 | NC | 25.23 | NC |
| CASELCO | 10.40 | NC | 684.47 | C | 6.84 | C |
| LASURECO | 12.56 | NC | 1,318.78 | NC | 28.34 | NC |
| MAGELCO | 27.86 | NC | 2,288.87 | NC | 54.57 | NC |
| CARAGA | | | | | | |
| ANECO | 1.87 | C | 84.65 | C | 10.66 | C |
| ASELCO | 3.84 | C | 216.50 | C | 7.78 | C |
| SURNECO | 3.34 | C | 191.98 | C | 9.61 | C |
| SIARELCO | 0.91 | C | 144.13 | C | 7.68 | C |
| DIELCO | 4.11 | C | 59.11 | C | 1.57 | C |
| SURSECO I | 2.21 | C | 245.61 | C | 9.79 | C |
| SURSECO II | 3.89 | C | 152.09 | C | 11.15 | C |

Note: C – Compliant, NC – Non-Compliant, dns – Did not Submit, inc - Incomplete

Appendix C: Institutional Compliance Rating and Energization Level

| Electric cooperatives | Institutional Rating | Energization Level | Color Classification |
|-----------------------|----------------------|--------------------|----------------------|
| Region I | | | |
| INEC | 97.00 | 99 | Yellow-1 |
| ISECO | 96.00 | 99 | Green |
| LUELCO | 100.00 | 97 | Green |
| PANELCO I | 97.00 | 93 | Yellow-1 |
| CENPELCO | 97.00 | 96 | Yellow-1 |
| PANELCO III | 95.00 | 97 | Green |
| Region II | | | |
| BATANELCO | 90.00 | 100 | Green |
| CAGELCO I | 100.00 | 95 | Green |
| CAGELCO II | 93.67 | 91 | Green |
| ISELCO I | 97.00 | 97 | Yellow-1 |
| ISELCO II | 95.00 | 96 | Yellow-1 |
| NUVELCO | 99.00 | 90 | Yellow-1 |
| QUIRELCO | 95.00 | 97 | Yellow-1 |
| CAR | | | |
| ABRECO | 91.00 | 95 | Red |
| BENECO | 100.00 | 96 | Green |
| IFELCO | 100.00 | 90 | Green |
| KAELCO | 100.00 | 91 | Yellow-1 |
| MOPRECO | 100.00 | 98 | Green |
| Region III | | | |
| AURELCO | 100.00 | 99 | Yellow-1 |
| TARELCO I | 95.00 | 99 | Yellow-1 |
| TARELCO II | 100.00 | 98 | Yellow-1 |
| NEECO I | 100.00 | 99 | Yellow-1 |
| NEECO II - AREA 1 | 100.00 | 96 | Green |
| NEECO II - AREA 2 | 100.00 | 97 | Green |
| SAJELCO | 100.00 | 97 | Yellow-1 |
| PRESCO | 100.00 | 97 | Green |
| PELCO I | 100.00 | 100 | Green |
| PELCO II | 100.00 | 97 | Yellow-1 |
| PELCO III | 95.00 | 100 | Yellow-1 |
| PENELCO | 100.00 | 99 | Green |
| ZAMECO I | 100.00 | 95 | Green |
| ZAMECO II | 97.00 | 99 | Green |

Note: C – Compliant, NC – Non-Compliant, dns – Did not Submit, inc - Incomplete

Appendix C: Institutional Compliance Rating and Energization Level

| Electric cooperatives | Institutional Rating | Energization Level | Color Classification |
|-----------------------|----------------------|--------------------|----------------------|
| Region IV-A | | | |
| FLECO | 100.00 | 95 | Green |
| BATELEC I | 100.00 | 99 | Yellow-1 |
| BATELEC II | 100.00 | 99 | Green |
| QUEZELCO I | 100.00 | 89 | Green |
| QUEZELCO II | 100.00 | 79 | Green |
| Region IV-B | | | |
| LUBELCO | 98.67 | 100 | Green |
| OMECO | 100.00 | 79 | Yellow-1 |
| ORMECO | 96.00 | 97 | Green |
| MARELCO | 100.00 | 100 | Yellow-1 |
| TIELCO | 100.00 | 98 | Yellow-1 |
| ROMELCO | 97.00 | 95 | Yellow-1 |
| BISELCO | 97.00 | 83 | Green |
| PALECO | 93.67 | 72 | Yellow-1 |
| Region V | | | |
| CANORECO | 97.00 | 91 | Green |
| CASURECO I | 100.00 | 92 | Yellow-1 |
| CASURECO II | 90.33 | 90 | Yellow-1 |
| CASURECO III | 100.00 | 86 | Yellow-1 |
| CASURECO IV | 100.00 | 97 | Green |
| ALECO | 85.00 | 93 | Red |
| SORECO I | 95.00 | 99 | Green |
| SORECO II | 97.00 | 96 | Yellow-1 |
| FICELCO | 100.00 | 98 | Green |
| MASELCO | 95.00 | 60 | Red |
| TISELCO | 15.33 | 91 | Yellow-1 |
| Region VI | | | |
| AKELCO | 100.00 | 98 | Yellow-1 |
| ANTECO | 99.00 | 98 | Green |
| CAPELCO | 98.67 | 90 | Yellow-1 |
| ILECO I | 100.00 | 95 | Green |
| ILECO II | 100.00 | 86 | Green |
| ILECO III | 100.00 | 91 | Yellow-1 |
| GUIMELCO | 80.67 | 91 | Yellow-1 |
| NONECO | 100.00 | 86 | Yellow-1 |
| CENECO | 100.00 | 87 | Yellow-1 |
| NOCECO | 95.00 | 76 | Yellow-1 |

Note: C – Compliant, NC – Non-Compliant, dns – Did not Submit, inc – Incomplete

Appendix C: Institutional Compliance Rating and Energization Level

| Electric cooperatives | Institutional Rating | Energization Level | Color Classification |
|-----------------------|----------------------|--------------------|----------------------|
| Region VII | | | |
| NORECO I | 100.00 | 73 | Green |
| NORECO II | 100.00 | 85 | Yellow-1 |
| BANELCO | 100.00 | 98 | Green |
| CEBECO I | 100.00 | 96 | Green |
| CEBECO II | 100.00 | 91 | Green |
| CEBECO III | 100.00 | 99 | Green |
| PROSIELCO | 100.00 | 100 | Green |
| CELCO | 100.00 | 95 | Green |
| BOHECO I | 97.33 | 100 | Green |
| BOHECO II | 100.00 | 95 | Yellow-1 |
| Region VIII | | | |
| DORELCO | 97.00 | 93 | Green |
| LEYECO II | 100.00 | 99 | Green |
| LEYECO III | 100.00 | 98 | Green |
| LEYECO IV | 100.00 | 100 | Green |
| LEYECO V | 100.00 | 92 | Green |
| SOLECO | 100.00 | 100 | Green |
| BILECO | 100.00 | 99 | Yellow-1 |
| NORSAMELCO | 93.00 | 82 | Yellow-1 |
| SAMELCO I | 100.00 | 94 | Green |
| SAMELCO II | 100.00 | 93 | Yellow-1 |
| ESAMELCO | 95.00 | 95 | Yellow-1 |
| Region IX | | | |
| ZANECO | 97.00 | 85 | Yellow-1 |
| ZAMSURECO I | 100.00 | 90 | Green |
| ZAMSURECO II | 96.00 | 68 | Yellow-2 |
| ZAMCELCO | 96.00 | 80 | Yellow-2 |
| Region X | | | |
| MOELCI I | 95.00 | 98 | Yellow-1 |
| MOELCI II | 100.00 | 99 | Yellow-1 |
| MORESCO I | 100.00 | 95 | Green |
| MORESCO II | 97.00 | 89 | Green |
| FIBECO | 95.00 | 89 | Yellow-2 |
| BUSECO | 90.00 | 93 | Green |
| CAMELCO | 86.00 | 99 | Yellow-1 |
| LANECO | 100.00 | 75 | Yellow-1 |

Note: C – Compliant, NC – Non-Compliant, dns – Did not Submit, inc – Incomplete

Appendix C: Institutional Compliance Rating and Energization Level

| Electric cooperatives | Institutional Rating | Energization Level | Color Classification |
|-----------------------|----------------------|--------------------|----------------------|
| Region XI | | | |
| DORECO | 100.00 | 84 | Yellow-2 |
| NORDECO | 92.00 | 73 | Yellow-1 |
| DASURECO | 95.00 | 84 | Green |
| Region XII | | | |
| COTELCO | 97.00 | 90 | Green |
| COTELCO-PPALMA | 90.00 | 67 | Yellow-2 |
| SOCOTECO I | 100.00 | 78 | Green |
| SOCOTECO II | 100.00 | 84 | Yellow-2 |
| SUKELCO | 97.00 | 83 | Yellow-1 |
| ARMM | | | |
| TAWELCO | 71.00 | 19 | Red |
| SIASELCO | 17.00 | 20 | Yellow-1 |
| SULECO | 94.33 | 24 | Red |
| BASELCO | 83.00 | 56 | Red |
| CASELCO | 62.67 | 58 | Yellow-1 |
| LASURECO | 80.67 | 55 | Red |
| MAGELCO | 74.00 | 32 | Yellow-2 |
| Region XIII | | | |
| ANECO | 100.00 | 98 | Green |
| ASELCO | 100.00 | 97 | Green |
| SURNECO | 89.00 | 98 | Green |
| SIARELCO | 98.00 | 99 | Green |
| DIELCO | 100.00 | 98 | Green |
| SURSECO I | 100.00 | 100 | Green |
| SURSECO II | 100.00 | 97 | Green |

Note: C – Compliant, NC – Non-Compliant, dns – Did not Submit, inc - Incomplete

Appendix D: List of Electric Cooperatives

Region I

INEC
ISECO
LUELCO
PANELCO I
CENPELCO
PANELCO III

Ilocos Region

Ilocos Norte Electric Cooperative, Inc.
Ilocos Sur Electric Cooperative, Inc.
La Union Electric Cooperative, Inc.
Pangasinan I Electric Cooperative
Central Pangasinan Electric Cooperative, Inc.
Pangasinan III Electric Cooperative

Region II

BATANELCO
CAGELCO I
CAGELCO II
ISELCO I
ISELCO II
NUVELCO
QUIRELCO

Cagayan Valley Region

Batanes Electric Cooperative, Inc.
Cagayan I Electric Cooperative, Inc.
Cagayan II Electric Cooperative, Inc.
Isabela I Electric Cooperative, Inc.
Isabela II Electric Cooperative
Nueva Vizcaya Electric Cooperative
Quirino Electric Cooperative

CAR

ABRECO
BENECO
IFELCO
KAELCO
MOPRECO

Cordillera Administrative Region

Abra Electric Cooperative
Benguet Electric Cooperative
Ifugao Electric Cooperative, Inc.
Kalinga-Apayao Electric Cooperative, Inc.
Mountain Province Electric Cooperative, Inc.

Region III

AURELCO
TARELCO I
TARELCO II
NEECO I
NEECO II - Area 1
NEECO II - Area 2
SAJELCO
PRESCO
PELCO I
PELCO II
PELCO III
PENELCO
ZAMECO I
ZAMECO II

Central Luzon

Aurora Electric Cooperative, Inc.
Tarlac I Electric Cooperative, Inc.
Tarlac II Electric Cooperative, Inc.
Nueva Ecija I Electric Cooperative, Inc.
Nueva Ecija II Electric Cooperative, Inc. - Area 1
Nueva Ecija II Electric Cooperative, Inc. - Area 2
San Jose City Electric Cooperative
Pampanga Rural Electric Service Coop., Inc.
Pampanga I Electric Cooperative, Inc.
Pampanga II Electric Cooperative, Inc.
Pampanga III Electric Cooperative, Inc.
Peninsula (Bataan) Electric Cooperative, Inc.
Zambales I Electric Cooperative, Inc.
Zambales II Electric Cooperative, Inc.

Appendix D: List of Electric Cooperatives

Region IV-A

FLECO
BATELEC I
BATELEC II
QUEZELCO I
QUEZELCO II

Region IV-B

LUBELCO
OMECO
ORMECO
MARELCO
TIELCO
ROMELCO
BISELCO
PALECO

Region V

CANORECO
CASURECO I
CASURECO II
CASURECO III
CASURECO IV
ALECO
SORECO I
SORECO II
FICELCO
MASELCO
TISELCO

Region VI

AKELCO
ANTECO
CAPELCO
ILECO I
ILECO II
ILECO III
GUIMELCO
NONECO
CENECO
NOCECO

CALABARZON

First Laguna Electric Cooperative, Inc.
Batangas I Mindoro Electric Cooperative, Inc.
Batangas II Electric Cooperative, Inc.
Quezon I Electric Cooperative, Inc.
Quezon II Electric Cooperative, Inc.

MIMAROPA Region

Lubang Electric Cooperative, Inc.
Occidental Mindoro Electric Cooperative, Inc.
Oriental Mindoro Electric Cooperative, Inc.
Marinduque Electric Cooperative, Inc.
Tablas Island Electric Cooperative, Inc.
Romblon Electric Cooperative, Inc.
Busuanga Island Electric Cooperative, Inc.
Palawan Electric Cooperative

Bicol Region

Camarines Norte Electric Cooperative, Inc.
Camarines Sur I Electric Cooperative, Inc.
Camarines Sur II Electric Cooperative, Inc.
Camarines Sur III Electric Cooperative, Inc.
Camarines Sur IV Electric Cooperative, Inc.
Albay Electric Cooperative, Inc.
Sorsogon I Electric Cooperative, Inc.
Sorsogon II Electric Cooperative
First Catanduanes Electric Cooperative, Inc.
Masbate Electric Cooperative, Inc.
Ticao Island Electric Cooperative, Inc.

Western Visayas

Aklan Electric Cooperative, Inc.
Antique Electric Cooperative, Inc.
Capiz Electric Cooperative, Inc.
Iloilo I Electric Cooperative, Inc.
Iloilo II Electric Cooperative, Inc.
Iloilo III Electric Cooperative, Inc.
Guimaras Electric Cooperative
Northern Negros Electric Cooperative, Inc.
Central Negros Electric Cooperative, Inc.
Negros Occidental Electric Cooperative

Appendix D: List of Electric Cooperatives

Region VII

NORECO I
NORECO II
BANELCO
CEBECO I
CEBECO II
CEBECO III
PROSIELCO
CELCO
BOHECO I
BOHECO II

Central Visayas

Negros Oriental I Electric Cooperative, Inc.
Negros Oriental II Electric Cooperative
Bantayan Island Electric Cooperative, Inc.
Cebu I Electric Cooperative, Inc.
Cebu II Electric Cooperative, Inc.
Cebu III Electric Cooperative, Inc.
Province of Siquijor Electric Cooperative, Inc.
Camotes Electric Cooperative, Inc.
Bohol I Electric Cooperative, Inc.
Bohol II Electric Cooperative, Inc.

Region VIII

DORELCO
LEYECO II
LEYECO III
LEYECO IV
LEYECO V
SOLECO
BILECO
NORSAMELCO
SAMELCO I
SAMELCO II
ESAMELCO

Eastern Visayas

Don Orestes Romualdez Electric Cooperative, Inc.
Leyte II Electric Cooperative, Inc.
Leyte III Electric Cooperative, Inc.
Leyte IV Electric Cooperative, Inc.
Leyte V Electric Cooperative, Inc.
Southern Leyte Electric Cooperative, Inc.
Biliran Electric Cooperative, Inc.
Northern Samar Electric Cooperative, Inc.
Samar I Electric Cooperative, Inc.
Samar II Electric Cooperative, Inc.
Eastern Samar Electric Cooperative, Inc.

Region IX

ZANECO
ZAMSURECO I
ZAMSURECO II
ZAMCELCO

Zamboanga Peninsula

Zamboanga del Norte Electric Cooperative, Inc.
Zamboanga del Sur I Electric Cooperative, Inc.
Zamboanga del Sur II Electric Cooperative, Inc.
Zamboanga City Electric Cooperative, Inc.

Region X

MOELCI I
MOELCI II
MORESCO I
MORESCO II
FIBECO
BUSECO
CAMELCO
LANECO

Northern Mindanao

Misamis Occidental I Electric Cooperative, Inc.
Misamis Occidental II Electric Cooperative, Inc.
Misamis Oriental I Electric Cooperative, Inc.
Misamis Oriental II Electric Cooperative, Inc.
First Bukidnon Electric Cooperative, Inc.
Bukidnon II Electric Cooperative, Inc.
Camiguin Electric Cooperative, Inc.
Lanao del Norte Electric Cooperative, Inc.

Appendix D: List of Electric Cooperatives

Region XI

DORECO
NORDECO
DASURECO

Davao Region

Davao Oriental Electric Cooperative, Inc.
Davao del Norte Electric Cooperative, Inc.
Davao del Sur Electric Cooperative, Inc.

Region XII

COTELCO
COTELCO-PPALMA
SOCOTECO I
SOCOTECO II
SUKELCO

SOCCSKSARGEN

Cotabato Electric Cooperative, Inc.
Cotabato Electric Cooperative, Inc. - PPALMA
South Cotabato I Electric Cooperative, Inc.
South Cotabato II Electric Cooperative, Inc.
Sultan Kudarat Electric Cooperative, Inc.

BARMM

TAWELCO
SIASELCO
SULECO
BASELCO
CASELCO
LASURECO
MAGELCO

Bangsamoro Autonomous Region in Muslim Mindanao

Tawi-Tawi Electric Cooperative, Inc.
Siasi Electric Cooperative, Inc.
Sulu Electric Cooperative, Inc.
Basilan Electric Cooperative, Inc.
Cagayan de Sulu Electric Cooperative, Inc.
Lanao del Sur Electric Cooperative, Inc.
Maguindanao Electric Cooperative, Inc.

Region XIII

ANECO
ASELCO
SURNECO
SIARELCO
DIELCO
SURSECO I
SURSECO II

Caraga Administrative Region

Agusan del Norte Electric Cooperative, Inc.
Agusan del Sur Electric Cooperative, Inc.
Surigao del Norte Electric Cooperative, Inc.
Siargao Electric Cooperative, Inc.
Dinagat Island Electric Cooperative, Inc.
Surigao del Sur I Electric Cooperative, Inc.
Surigao del Sur II Electric Cooperative, Inc.

